

For Research Use Only

# INPPL1 Polyclonal antibody

Catalog Number: 26678-1-AP



## Basic Information

### Catalog Number:

26678-1-AP

### Size:

150ul, Concentration: 700 ug/ml by Nanodrop;

### Source:

Rabbit

### Isotype:

IgG

### Immunogen Catalog Number:

AG24790

### GenBank Accession Number:

BC140853

### GeneID (NCBI):

3636

### UNIPROT ID:

O15357

### Full Name:

inositol polyphosphate phosphatase-like 1

### Calculated MW:

1258 aa, 139 kDa

### Observed MW:

150 kDa

### Purification Method:

Antigen affinity purification

### Recommended Dilutions:

WB 1:500-1:3000

IP 0.5-4.0 ug for 1.0-3.0 mg of total protein lysate

IHC 1:250-1:1000

## Applications

### Tested Applications:

WB, IP, IHC, ELISA

### Species Specificity:

human, mouse

**Note-IHC: suggested antigen retrieval with TE buffer pH 9.0; (\*) Alternatively, antigen retrieval may be performed with citrate buffer pH 6.0**

### Positive Controls:

WB : HeLa cells, NIH/3T3 cells

IP : HeLa cells,

IHC : mouse stomach tissue,

## Storage

### Storage:

Store at -20°C. Stable for one year after shipment.

### Storage Buffer:

PBS with 0.02% sodium azide and 50% glycerol pH 7.3.

Aliquoting is unnecessary for -20°C storage

\*\*\* 20ul sizes contain 0.1% BSA

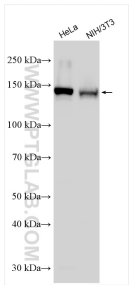
For technical support and original validation data for this product please contact:

T: 1 (888) 4PTGLAB (1-888-478-4522) (toll free in USA), or 1(312) 455-8498 (outside USA)

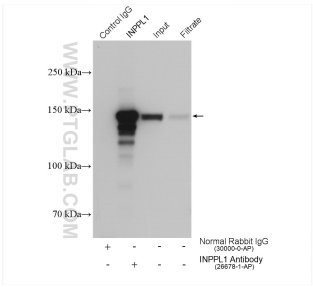
E: [proteintech@ptglab.com](mailto:proteintech@ptglab.com)  
W: [ptglab.com](http://ptglab.com)

This product is exclusively available under Proteintech Group brand and is not available to purchase from any other manufacturer.

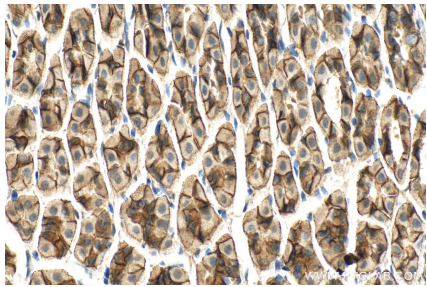
Selected Validation Data



Various lysates were subjected to SDS PAGE followed by western blot with 26678-1-AP (INPPL1 antibody) at dilution of 1:1500 incubated at room temperature for 1.5 hours.



IP result of anti-INPPL1 (IP:26678-1-AP, 4ug; Detection:26678-1-AP 1:800) with HeLa cells lysate 2520 ug.



Immunohistochemical analysis of paraffin-embedded mouse stomach tissue slide using 26678-1-AP (INPPL1 antibody) at dilution of 1:500 (under 40x lens). Heat mediated antigen retrieval with Tris-EDTA buffer (pH 9.0).