

For Research Use Only

# CLCC1 Polyclonal antibody

Catalog Number: 26680-1-AP

Featured Product

1 Publications



## Basic Information

### Catalog Number:

26680-1-AP

### Size:

150ul, Concentration: 900 ug/ml by Nanodrop and 467 ug/ml by Bradford method using BSA as the standard;

### Source:

Rabbit

### Isotype:

IgG

### Immunogen Catalog Number:

AG24682

### GenBank Accession Number:

BC002939

### GeneID (NCBI):

23155

### UNIPROT ID:

Q96S66

### Full Name:

chloride channel CLIC-like 1

### Calculated MW:

551 aa, 62 kDa

### Observed MW:

50-60 kDa

### Purification Method:

Antigen affinity purification

### Recommended Dilutions:

WB 1:1000-1:6000

## Applications

### Tested Applications:

WB, ELISA

### Cited Applications:

WB

### Species Specificity:

human

### Cited Species:

human

### Positive Controls:

WB: COLO 320 cells,

## Background Information

CLCC1, also known as MCLC, is a transmembrane protein that localizes to intracellular compartments, including endoplasmic reticulum (ER), and it functions as a chloride channel (PMID: 11279057). It has been shown that loss of CLCC1 results in ER Stress, misfolded protein accumulation, and neurodegeneration (PMID: 25698737). CLCC1 forms homomultimer in the ER membrane and is a pore-forming component of an anion channel. Studies found that disruption of ER ion homeostasis maintained by CLCC1 is one of the causes of neurodegenerative diseases, such as ALS (amyotrophic lateral sclerosis) (PMID: 37142673).

## Notable Publications

Author	Pubmed ID	Journal	Application
Hannah N Gruner	37033725	PeerJ	WB

## Storage

### Storage:

Store at -20°C. Stable for one year after shipment.

### Storage Buffer:

PBS with 0.02% sodium azide and 50% glycerol pH 7.3.

Aliquoting is unnecessary for -20°C storage

\*\*\* 20ul sizes contain 0.1% BSA

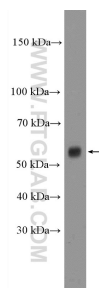
For technical support and original validation data for this product please contact:

T: 1 (888) 4PTGLAB (1-888-478-4522) (toll free in USA), or 1(312) 455-8498 (outside USA)

E: [proteintech@ptglab.com](mailto:proteintech@ptglab.com)  
W: [ptglab.com](http://ptglab.com)

This product is exclusively available under Proteintech Group brand and is not available to purchase from any other manufacturer.

## Selected Validation Data



COLO 320 cells were subjected to SDS PAGE followed by western blot with 26680-1-AP (CLCC1 Antibody) at dilution of 1:3000 incubated at room temperature for 1.5 hours.