

For Research Use Only

CYYR1 Polyclonal antibody, PBS Only

Catalog Number: 26686-1-PBS



Basic Information

Catalog Number:

26686-1-PBS

Size:

100ug, Concentration: 1 mg/ml by Nanodrop;

Source:

Rabbit

Isotype:

IgG

Immunogen Catalog Number:

AG24710

GenBank Accession Number:

BC036761

GeneID (NCBI):

116159

UNIPROT ID:

Q96J86

Full Name:

cysteine/tyrosine-rich 1

Calculated MW:

154 aa, 17 kDa

Observed MW:

7-16 kDa

Purification Method:

Antigen affinity purification

Applications

Tested Applications:

IP, Indirect ELISA

Species Specificity:

human, mouse

Background Information

CYYR1 (Cysteine and tyrosine-rich protein 1) is characterized by a central cysteine- and tyrosine-rich domain, including a CCSYYAY box, and a proline-rich region at the carboxy-terminus with repeated PPPY motifs (PMID: 17442112). It is predicted to have a transmembrane domain and a signal peptide, suggesting it may be located in cell or cell compartment membranes (PMID: 17442112). CYYR1 has 6 isoforms, and the molecular weight ranges from 7kd to 16kd.

Storage

Storage:

Store at -80°C.

Storage Buffer:

PBS Only

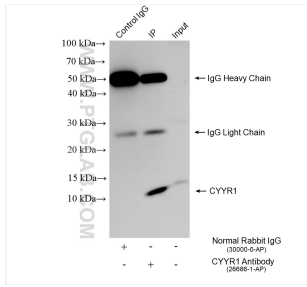
For technical support and original validation data for this product please contact:

T: 1 (888) 4PTGLAB (1-888-478-4522) (toll free in USA), or 1(312) 455-8498 (outside USA)

E: proteintech@ptglab.com
W: ptglab.com

This product is exclusively available under Proteintech Group brand and is not available to purchase from any other manufacturer.

Selected Validation Data



IP result of anti-CYYR1 (IP:26686-1-AP, 4ug;
Detection:26686-1-AP 1:500) with mouse pancreas
tissue lysate 3200 ug. This data was developed
using the same antibody clone with 26686-1-PBS in
a different storage buffer formulation.