

For Research Use Only

CYR61/CCN1 Polyclonal antibody

Catalog Number: 26689-1-AP

Featured Product

38 Publications



Basic Information

Catalog Number:

26689-1-AP

Size:

150ul, Concentration: 750 ug/ml by Nanodrop and 333 ug/ml by Bradford method using BSA as the standard;

Source:

Rabbit

Isotype:

IgG

Immunogen Catalog Number:

AG25129

GenBank Accession Number:

BC001271

GeneID (NCBI):

3491

UNIPROT ID:

O00622

Full Name:

cysteine-rich, angiogenic inducer, 61

Calculated MW:

42 kDa

Observed MW:

42 kDa

Purification Method:

Antigen affinity purification

Recommended Dilutions:

WB: 1:1000-1:4000

IP: 0.5-4.0 ug for 1.0-3.0 mg of total protein lysate

IHC: 1:50-1:500

IF/ICC: 1:200-1:800

FC (Intra): 0.25 ug per 10⁶ cells in a 100 µl suspension

Applications

Tested Applications:

WB, IHC, IF/ICC, FC (Intra), IP, ELISA

Cited Applications:

WB, IHC, IF, IP

Species Specificity:

human

Cited Species:

human, mouse, rat

Positive Controls:

WB: A431 cells, MDA-MB-453s cells, HeLa cells

IP: HeLa cells,

IHC: human colon cancer tissue, human ovary tumor tissue

IF/ICC: A431 cells, MCF-7 cells

FC (Intra): HeLa cells,

Note-IHC: suggested antigen retrieval with TE buffer pH 9.0; (*) Alternatively, antigen retrieval may be performed with citrate buffer pH 6.0

Background Information

CYR61 is a member of the CYR61/CTGF/NOV (CCN) protein family. CYR61 participated in cell mitogenesis, cellular adhesion, migration, differentiation, angiogenesis, and survival. Cyr61 is especially associated with diseases related to chronic inflammation, including RA, Crohn's disease and ulcerative colitis. CYR61 may serve essential roles as either an oncogene or a tumor suppressor, depending on the cancer cell type. CYR61 also induces angiogenesis, which supplies oxygen and nutrients to tumors during growth. CYR61 can also play a role in the proliferation, invasion, survival, and metastasis of cancer cells.

Notable Publications

Author	Pubmed ID	Journal	Application
Xiaobing Miao	32976820	Exp Mol Pathol	WB,IHC
Gang Xu	34480788	Environ Toxicol	WB
Nathan C Balukoff	33188200	Nat Commun	WB,IF

Storage

Storage:

Store at -20°C. Stable for one year after shipment.

Storage Buffer:

PBS with 0.02% sodium azide and 50% glycerol, pH7.3

Aliquoting is unnecessary for -20°C storage

*** 20ul sizes contain 0.1% BSA

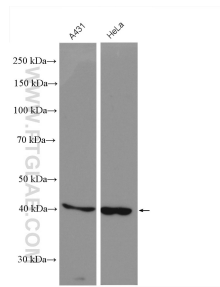
For technical support and original validation data for this product please contact:

T: 1 (888) 4PTGLAB (1-888-478-4522) (toll free in USA), or 1(312) 455-8498 (outside USA)

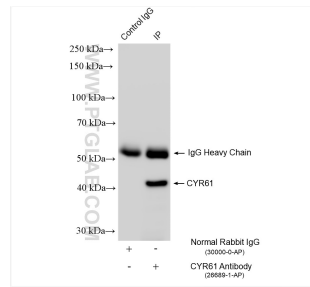
E: proteintech@ptglab.com
W: ptglab.com

This product is exclusively available under Proteintech Group brand and is not available to purchase from any other manufacturer.

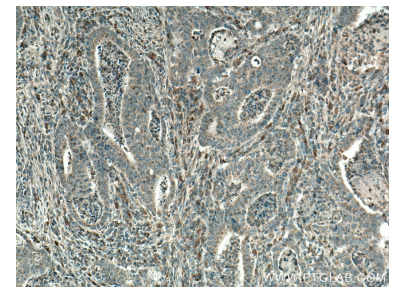
Selected Validation Data



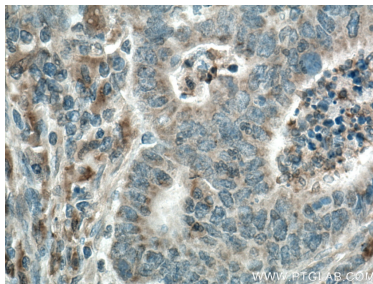
Various lysates were subjected to SDS PAGE followed by western blot with 26689-1-AP (CYR61/CCN1 antibody) at dilution of 1:2000 incubated at room temperature for 1.5 hours.



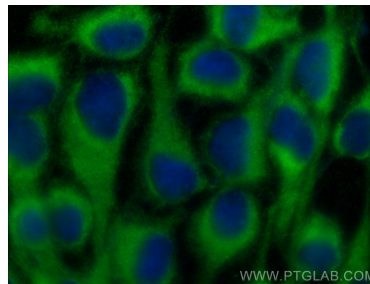
IP result of anti-CYR61/CCN1 (IP:26689-1-AP, 4ug; Detection:26689-1-AP 1:800) with HeLa cells lysate 1200 ug.



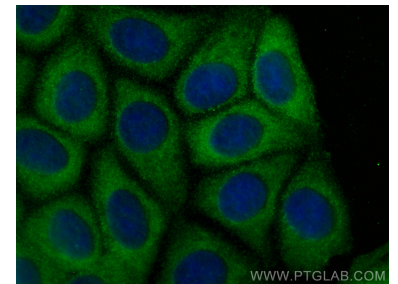
Immunohistochemical analysis of paraffin-embedded human colon cancer tissue slide using 26689-1-AP (CYR61/CCN1 antibody) at dilution of 1:200 (under 10x lens. Heat mediated antigen retrieval with Tris-EDTA buffer (pH 9.0).



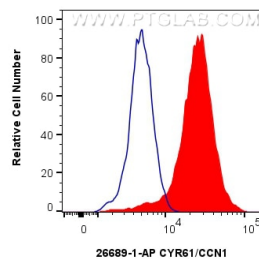
Immunohistochemical analysis of paraffin-embedded human colon cancer tissue slide using 26689-1-AP (CYR61/CCN1 antibody) at dilution of 1:200 (under 40x lens. Heat mediated antigen retrieval with Tris-EDTA buffer (pH 9.0).



Immunofluorescent analysis of (-20°C Methanol) fixed A431 cells using CYR61/CCN1 antibody (26689-1-AP) at dilution of 1:400 and CoraLite®488-Conjugated Goat Anti-Rabbit IgG(H+L) (SA00013-2).



Immunofluorescent analysis of (-20°C Methanol) fixed MCF-7 cells using CYR61/CCN1 antibody (26689-1-AP) at dilution of 1:400 and CoraLite®488-Conjugated Goat Anti-Rabbit IgG(H+L) (SA00013-2).



1x10⁶ HeLa cells were intracellularly stained with 0.25 ug CYR61/CCN1 Polyclonal antibody (26689-1-AP) and CoraLite®488-Conjugated Goat Anti-Rabbit IgG(H+L) (SA00013-2)(red), or 0.25 ug Rabbit IgG control Rabbit PolyAb (30000-O-AP) (blue). Cells were fixed with 4% PFA and permeabilized with Flow Cytometry Perm Buffer (PF00011-C).