

For Research Use Only

BMPR1B Polyclonal antibody

Catalog Number: 26696-1-AP

1 Publications



Basic Information

Catalog Number:

26696-1-AP

Size:

150ul, Concentration: 750 ug/ml by Nanodrop;

Source:

Rabbit

Isotype:

IgG

Immunogen Catalog Number:

AG24902

GenBank Accession Number:

BC047773

GeneID (NCBI):

658

UNIPROT ID:

O00238

Full Name:

bone morphogenetic protein receptor, type IB

Calculated MW:

57 kDa

Observed MW:

50 kDa

Purification Method:

Antigen affinity purification

Recommended Dilutions:

WB 1:500-1:1000

IF/ICC 1:200-1:800

Applications

Tested Applications:

WB, IF/ICC, ELISA

Cited Applications:

WB

Species Specificity:

human, mouse, rat

Cited Species:

human

Positive Controls:

WB : mouse colon tissue, rat colon tissue

IF/ICC : MCF-7 cells,

Background Information

BMPR1B (Bone morphogenetic protein receptor type-1B) is also named as CDw293. BMPR1B belongs to the protein kinase superfamily. BMPR1B is on ligand binding, forms a receptor complex consisting of two type II and two type I transmembrane serine/threonine kinases. Type II receptors phosphorylate and activate type I receptors which autophosphorylate, then bind and activate SMAD transcriptional regulators. BMPR1B is receptor for BMP7/OP-1 and GDF5. BMPR1B Positively regulates chondrocyte differentiation through GDF5 interaction.

Notable Publications

Author	Pubmed ID	Journal	Application
Hui Xu	39117967	J Neurooncol	WB

Storage

Storage:

Store at -20°C. Stable for one year after shipment.

Storage Buffer:

PBS with 0.02% sodium azide and 50% glycerol pH 7.3.

Aliquoting is unnecessary for -20°C storage

*** 20ul sizes contain 0.1% BSA

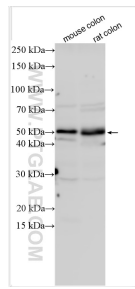
For technical support and original validation data for this product please contact:

T: 1 (888) 4PTGLAB (1-888-478-4522) (toll free in USA), or 1(312) 455-8498 (outside USA)

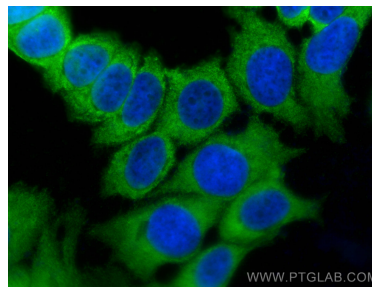
E: proteintech@ptglab.com
W: ptglab.com

This product is exclusively available under Proteintech Group brand and is not available to purchase from any other manufacturer.

Selected Validation Data



Various lysates were subjected to SDS PAGE followed by western blot with 26696-1-AP (BMPR1B antibody) at dilution of 1:500 incubated at room temperature for 1.5 hours.



Immunofluorescent analysis of (-20°C Methanol) fixed MCF-7 cells using BMPR1B antibody (26696-1-AP) at dilution of 1:400 and CoraLite® 488-Conjugated Goat Anti-Rabbit IgG(H+L).