

For Research Use Only

# WDR35 Polyclonal antibody

Catalog Number: 26701-1-AP



## Basic Information

|   |  |  |
|---|--|--|
| <b>Catalog Number:</b><br>26701-1-AP                          | <b>GenBank Accession Number:</b><br>BC036659 | <b>Purification Method:</b><br>Antigen affinity purification |
| <b>Size:</b><br>150ul , Concentration: 300 µg/ml by Nanodrop; | <b>GeneID (NCBI):</b><br>57539               | <b>Recommended Dilutions:</b><br>IF 1:200-1:800              |
| <b>Source:</b><br>Rabbit                                      | <b>Full Name:</b><br>WD repeat domain 35     |  |
| <b>Isotype:</b><br>IgG  | <b>Calculated MW:</b><br>1170 aa, 132 kDa    |  |
| <b>Immunogen Catalog Number:</b><br>AG24965                   |  |  |

## Applications

|  |  |
|--|--|
| <b>Tested Applications:</b><br>IF, ELISA     | <b>Positive Controls:</b><br>IF : MDCK cells, hTERT-RPE1 cells |
| <b>Species Specificity:</b><br>human, Canine |  |

## Background Information

WDR35, a component of the IFT complex A (IFT-A), is required for retrograde ciliary transport and entry into cilia of G protein-coupled receptors (GPCRs). It is involved in ciliogenesis and ciliary protein trafficking (PMID:21473986, PMID:28400947, PMID:29220510). It may promote CASP3 activation and TNF-stimulated apoptosis (PMID: 20193664).

## Storage

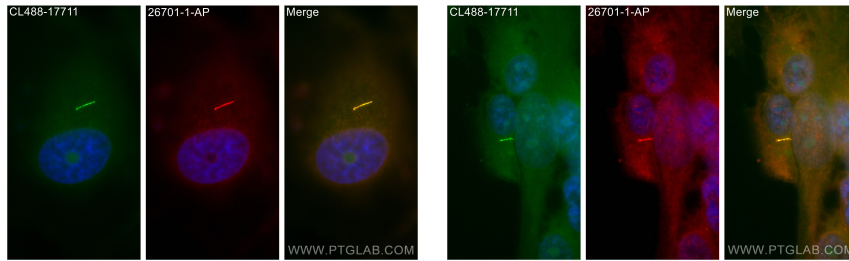
**Storage:**  
Store at -20°C. Stable for one year after shipment.  
**Storage Buffer:**  
PBS with 0.02% sodium azide and 50% glycerol pH 7.3.  
Aliquoting is unnecessary for -20°C storage

\*\*\* 20ul sizes contain 0.1% BSA

For technical support and original validation data for this product please contact:  
T: 1 (888) 4PTGLAB (1-888-478-4522) (toll free in USA), or 1(312) 455-8498 (outside USA)  
E: [proteintech@ptglab.com](mailto:proteintech@ptglab.com)  
W: [ptglab.com](http://ptglab.com)

This product is exclusively available under Proteintech Group brand and is not available to purchase from any other manufacturer.

## Selected Validation Data



Immunofluorescent analysis of (-20°C Methanol) fixed MDCK cells using WDR35 antibody (26701-1-AP) at dilution of 1:400 and CoraLite® 594-Conjugated AffiniPure Goat Anti-Rabbit IgG(H+L), CoraLite® Plus 488 ARL13B antibody (CL488-17711, green).

Immunofluorescent analysis of (-20°C Methanol) fixed hTERT-RPE1 cells using WDR35 antibody (26701-1-AP) at dilution of 1:400 and CoraLite® 594-Conjugated AffiniPure Goat Anti-Rabbit IgG(H+L), CoraLite® Plus 488 ARL13B antibody (CL488-17711, green).