

For Research Use Only

ATP8 Polyclonal antibody

Catalog Number: 26723-1-AP

Featured Product

39 Publications



Basic Information

Catalog Number:

26723-1-AP

Size:

150ul, Concentration: 850 ug/ml by Nanodrop and 667 ug/ml by Bradford method using BSA as the standard;

Source:

Rabbit

Isotype:

IgG

GenBank Accession Number:

YP_003024030

GeneID (NCBI):

4509

Full Name:

ATP synthase 8; ATPase subunit 8

Calculated MW:

8 kDa

Observed MW:

8 kDa

Purification Method:

Antigen affinity purification

Recommended Dilutions:

WB 1:1000-1:4000

IHC 1:50-1:500

IF/ICC 1:50-1:500

Applications

Tested Applications:

WB, IHC, IF/ICC, ELISA

Cited Applications:

WB

Species Specificity:

human, mouse, rat, pig

Cited Species:

human, mouse

Note-IHC: suggested antigen retrieval with TE buffer pH 9.0; (*) Alternatively, antigen retrieval may be performed with citrate buffer pH 6.0

Positive Controls:

WB: HEK-293 cells, 143B cells, HepG2 cells, LNCaP cells, rat heart tissue

IHC: mouse cerebellum tissue,

IF/ICC: HepG2 cells,

Background Information

ATP8 is a subunit of F₀, the functional domain of mitochondrial ATP synthase or complex V. Mutation of ATP8 has been reported as the cause of apical hypertrophic cardiomyopathy and neuropathy.

Notable Publications

Author	Pubmed ID	Journal	Application
Benedetta Ruzzenente	30252186	Hum Mutat	WB
Ying Shu	36314841	EMBO J	WB
Xiang Zhuang	31628462	Carcinogenesis	WB

Storage

Storage:

Store at -20°C. Stable for one year after shipment.

Storage Buffer:

PBS with 0.02% sodium azide and 50% glycerol pH 7.3.

Aliquoting is unnecessary for -20°C storage

*** 20ul sizes contain 0.1% BSA

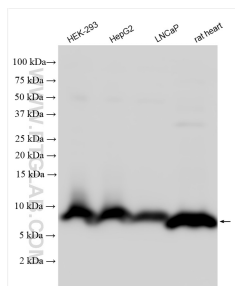
For technical support and original validation data for this product please contact:

T: 1 (888) 4PTGLAB (1-888-478-4522) (toll free in USA), or 1(312) 455-8498 (outside USA)

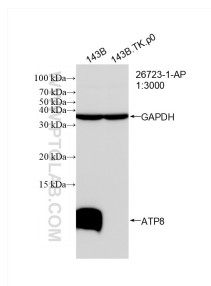
E: proteintech@ptglab.com
W: ptglab.com

This product is exclusively available under Proteintech Group brand and is not available to purchase from any other manufacturer.

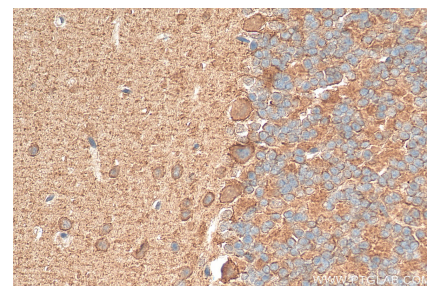
Selected Validation Data



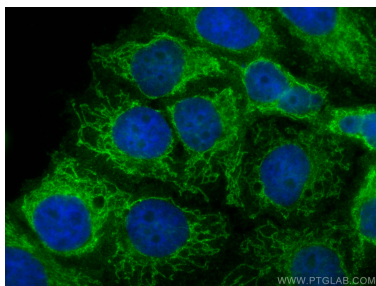
Various lysates were subjected to SDS PAGE followed by western blot with 26723-1-AP (ATP8 antibody) at dilution of 1:2000 incubated at room temperature for 1.5 hours.



WB result of ATP8 antibody (ATP8; 1:3000; incubated at room temperature for 1.5 hours) with 143B and 143B.TK.p0 cell. 143B is wild-type cell line, 143B.TK.p0 is mtDNA deletion cell line.



Immunohistochemical analysis of paraffin-embedded mouse cerebellum tissue slide using 26723-1-AP (ATP8 antibody) at dilution of 1:100 (under 40x lens). Heat mediated antigen retrieval with Tris-EDTA buffer (pH 9.0).



Immunofluorescent analysis of (4% PFA) fixed HepG2 cells using ATP8 antibody (26723-1-AP) at dilution of 1:200 and CoraLite® 488-Conjugated Goat Anti-Rabbit IgG(H+L).