

For Research Use Only

# SLC6A6/TAUT Polyclonal antibody

Catalog Number: 26725-1-AP



## Basic Information

<b>Catalog Number:</b> 26725-1-AP	<b>GenBank Accession Number:</b> BC137128	<b>Purification Method:</b> Antigen affinity purification
<b>Size:</b> 150ul , Concentration: 450 µg/ml by Nanodrop;	<b>GeneID (NCBI):</b> 6533	<b>Recommended Dilutions:</b> WB 1:500-1:2000 IHC 1:50-1:500
<b>Source:</b> Rabbit	<b>Full Name:</b> solute carrier family 6 (neurotransmitter transporter, taurine), member 6	
<b>Isotype:</b> IgG	<b>Observed MW:</b> 70 kDa	
<b>Immunogen Catalog Number:</b> AG24935		

## Applications

<b>Tested Applications:</b> IHC, WB, ELISA	<b>Positive Controls:</b> WB : mouse eye tissue, IHC : rat eye tissue,
<b>Species Specificity:</b> mouse, rat, human	

**Note-IHC: suggested antigen retrieval with TE buffer pH 9.0; (\*) Alternatively, antigen retrieval may be performed with citrate buffer pH 6.0**

## Background Information

SLC6A6, also known as TAUT, belongs to the solute carrier 6 (SLC6) family. SLC6A6 is expressed in retinal capillary endothelial cells and mediates the transport of taurine. SLC6A6 can also mediate the transport of beta-alanine, hypotaurine, and gamma-aminobutyric acid. SLC6A6 has 2 isoforms with the molecular mass of 23 and 70 kDa. Sometimes bands of 50 (non-glycosylated) and 75 kDa (glycosylated) may be detected refer to literature (PMID: 35050188).

## Storage

**Storage:**  
Store at -20°C. Stable for one year after shipment.  
**Storage Buffer:**  
PBS with 0.02% sodium azide and 50% glycerol pH 7.3.  
Aliquoting is unnecessary for -20°C storage

\*\*\* 20ul sizes contain 0.1% BSA

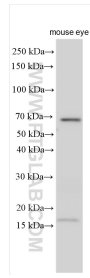
For technical support and original validation data for this product please contact:

T: 1 (888) 4PTGLAB (1-888-478-4522) (toll free in USA), or 1(312) 455-8498 (outside USA)

E: proteintech@ptglab.com  
W: ptglab.com

This product is exclusively available under Proteintech Group brand and is not available to purchase from any other manufacturer.

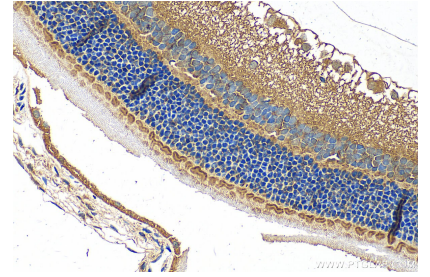
## Selected Validation Data



mouse eye tissue were subjected to SDS PAGE followed by western blot with 26725-1-AP (SLC6A6/TAUT antibody) at dilution of 1:1000 incubated at room temperature for 1.5 hours.



Immunohistochemical analysis of paraffin-embedded rat eye tissue slide using 26725-1-AP (SLC6A6/TAUT antibody) at dilution of 1:200 (under 10x lens). Heat mediated antigen retrieval with Tris-EDTA buffer (pH 9.0).



Immunohistochemical analysis of paraffin-embedded rat eye tissue slide using 26725-1-AP (SLC6A6/TAUT antibody) at dilution of 1:200 (under 40x lens). Heat mediated antigen retrieval with Tris-EDTA buffer (pH 9.0).