

For Research Use Only

# FAM176A Polyclonal antibody

Catalog Number: 26726-1-AP

Featured Product

1 Publications



## Basic Information

<b>Catalog Number:</b> 26726-1-AP	<b>GenBank Accession Number:</b> BC063016	<b>Purification Method:</b> Antigen affinity purification
<b>Size:</b> 150ul, Concentration: 1200 µg/ml by Nanodrop and 700 µg/ml by Bradford method using BSA as the standard;	<b>GeneID (NCBI):</b> 84141	<b>Recommended Dilutions:</b> IHC 1:50-1:500
<b>Source:</b> Rabbit	<b>Full Name:</b> family with sequence similarity 176, member A	
<b>Isotype:</b> IgG	<b>Calculated MW:</b> 17 kDa	
<b>Immunogen Catalog Number:</b> AG24990		

## Applications

<b>Tested Applications:</b> IHC, ELISA	<b>Positive Controls:</b> IHC : human pancreas tissue,
<b>Cited Applications:</b> WB	
<b>Species Specificity:</b> human, mouse	
<b>Cited Species:</b> mouse	

**Note-IHC: suggested antigen retrieval with TE buffer pH 9.0; (\*) Alternatively, antigen retrieval may be performed with citrate buffer pH 6.0**

## Background Information

### Notable Publications

Author	Pubmed ID	Journal	Application
Jingxuan Li	31977009	Cardiovasc Res	WB

## Storage

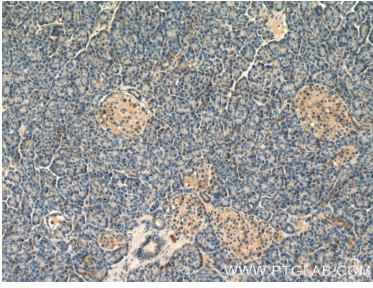
**Storage:**  
Store at -20°C. Stable for one year after shipment.  
**Storage Buffer:**  
PBS with 0.02% sodium azide and 50% glycerol pH 7.3.  
Aliquoting is unnecessary for -20°C storage

\*\*\* 20ul sizes contain 0.1% BSA

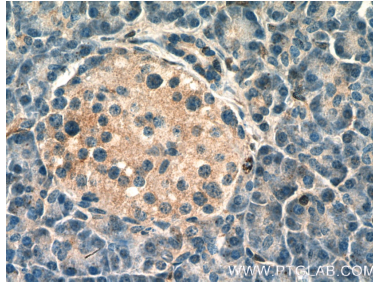
For technical support and original validation data for this product please contact:  
T: 1 (888) 4PTGLAB (1-888-478-4522) (toll free in USA), or 1(312) 455-8498 (outside USA)  
E: proteintech@ptglab.com  
W: ptglab.com

This product is exclusively available under Proteintech Group brand and is not available to purchase from any other manufacturer.

## Selected Validation Data



Immunohistochemical analysis of paraffin-embedded human pancreas tissue slide using 26726-1-AP (FAM176A Antibody) at dilution of 1:200 (under 10x lens).



Immunohistochemical analysis of paraffin-embedded human pancreas tissue slide using 26726-1-AP (FAM176A Antibody) at dilution of 1:200 (under 40x lens).