

For Research Use Only

SLC17A9 Polyclonal antibody

Catalog Number: 26731-1-AP

Featured Product

3 Publications



Basic Information

Catalog Number: 26731-1-AP	GenBank Accession Number: BC025312	Purification Method: Antigen affinity purification
Size: 150ul, Concentration: 700 µg/ml by Nanodrop;	GeneID (NCBI): 63910	Recommended Dilutions: WB 1:500-1:2000 IP 0.5-4.0 µg for 1.0-3.0 mg of total protein lysate IHC 1:50-1:500 IF 1:50-1:500
Source: Rabbit	Full Name: solute carrier family 17, member 9	
Isotype: IgG	Calculated MW: 436 aa, 47 kDa	
Immunogen Catalog Number: AG24970	Observed MW: 68-70 kDa	

Applications

Tested Applications:
IF, IHC, IP, WB, ELISA

Cited Applications:
IF, IHC, WB

Species Specificity:
human, mouse, rat

Cited Species:
human, mouse

Note-IHC: suggested antigen retrieval with TE buffer pH 9.0; (*) Alternatively, antigen retrieval may be performed with citrate buffer pH 6.0

Positive Controls:

WB: rat brain tissue, C2C12 cells, fetal human brain tissue, mouse brain tissue, Caco-2 cells, THP-1 cells

IP: mouse brain tissue,

IHC: human skin tissue,

IF: human pancreas tissue,

Background Information

Notable Publications

Author	Pubmed ID	Journal	Application
Weiyan Li	36590170	iScience	IHC, WB
Junqing Li	37559587	Oncol Lett	WB
Jared Senfeld	37378329	iScience	IHC, IF

Storage

Storage:

Store at -20°C. Stable for one year after shipment.

Storage Buffer:

PBS with 0.02% sodium azide and 50% glycerol pH 7.3.

Aliquoting is unnecessary for -20°C storage

*** 20ul sizes contain 0.1% BSA

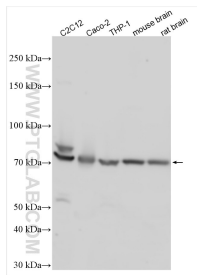
For technical support and original validation data for this product please contact:

T: 1 (888) 4PTGLAB (1-888-478-4522) (toll free in USA), or 1(312) 455-8498 (outside USA)

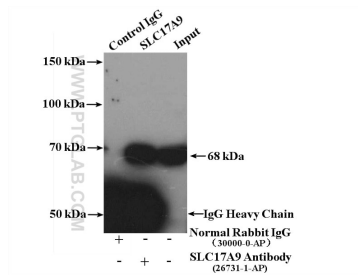
E: proteintech@ptglab.com
W: ptglab.com

This product is exclusively available under Proteintech Group brand and is not available to purchase from any other manufacturer.

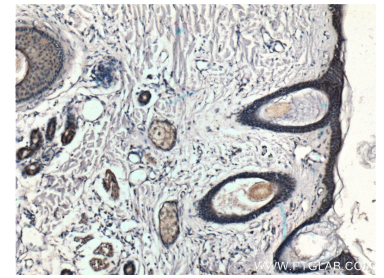
Selected Validation Data



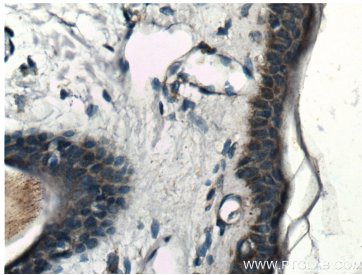
Various lysates were subjected to SDS PAGE followed by western blot with 26731-1-AP (SLC17A9 antibody) at dilution of 1:1000 incubated at room temperature for 1.5 hours.



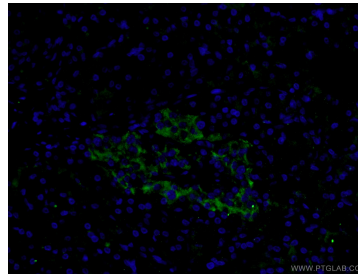
IP Result of anti-SLC17A9 (IP:26731-1-AP, 4ug; Detection:26731-1-AP 1:1000) with mouse brain tissue lysate 4400ug.



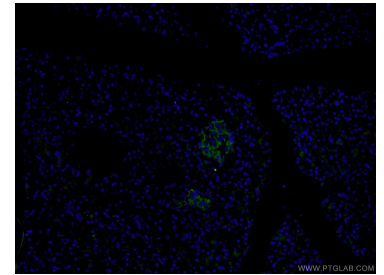
Immunohistochemical analysis of paraffin-embedded human skin tissue slide using 26731-1-AP (SLC17A9 Antibody) at dilution of 1:200 (under 10x lens).



Immunohistochemical analysis of paraffin-embedded human skin tissue slide using 26731-1-AP (SLC17A9 Antibody) at dilution of 1:200 (under 40x lens).



Immunofluorescent analysis of (4% PFA) fixed human pancreas tissue using 26731-1-AP (SLC17A9 antibody) at dilution of 1:100 and Alexa Fluor 488-Conjugated AffiniPure Goat Anti-Rabbit IgG(H+L).



Immunofluorescent analysis of (4% PFA) fixed human pancreas tissue using 26731-1-AP (SLC17A9 antibody) at dilution of 1:100 and Alexa Fluor 488-Conjugated AffiniPure Goat Anti-Rabbit IgG(H+L).