

For Research Use Only

CYBRD1 Polyclonal antibody

Catalog Number: 26735-1-AP

3 Publications



Basic Information

Catalog Number:

26735-1-AP

Size:

150ul, Concentration: 1000 ug/ml by Nanodrop and 633 ug/ml by Bradford method using BSA as the standard;

Source:

Rabbit

Isotype:

IgG

Immunogen Catalog Number:

AG24968

GenBank Accession Number:

BC065290

GeneID (NCBI):

79901

UNIPROT ID:

Q53TN4

Full Name:

cytochrome b reductase 1

Observed MW:

25 kDa

Purification Method:

Antigen affinity purification

Recommended Dilutions:

WB 1:500-1:3000

IHC 1:200-1:800

Applications

Tested Applications:

WB, IHC, ELISA

Cited Applications:

WB, IHC

Species Specificity:

human

Cited Species:

human, mouse, pig

Note-IHC: suggested antigen retrieval with TE buffer pH 9.0; (*) Alternatively, antigen retrieval may be performed with citrate buffer pH 6.0

Positive Controls:

WB : COLO 320 cells,

IHC : human breast cancer tissue, human lung cancer tissue

Notable Publications

Author	Pubmed ID	Journal	Application
Shihui Guo	35590120	Biol Trace Elem Res	WB
Haoxuan Ding	32583831	Metallomics	WB
Hsiang-Ying Lee	33987019	PeerJ	WB, IHC

Storage

Storage:

Store at -20°C. Stable for one year after shipment.

Storage Buffer:

PBS with 0.02% sodium azide and 50% glycerol pH 7.3.

Aliquoting is unnecessary for -20°C storage

*** 20ul sizes contain 0.1% BSA

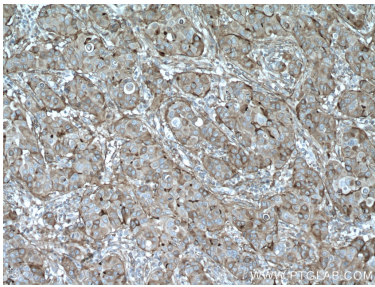
For technical support and original validation data for this product please contact:

T: 1 (888) 4PTGLAB (1-888-478-4522) (toll free in USA), or 1(312) 455-8498 (outside USA)

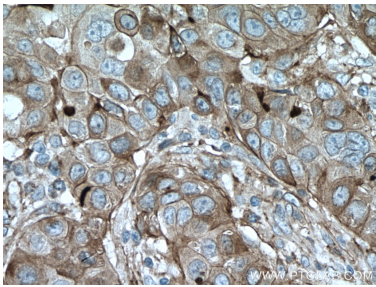
E: proteintech@ptglab.com
W: ptglab.com

This product is exclusively available under Proteintech Group brand and is not available to purchase from any other manufacturer.

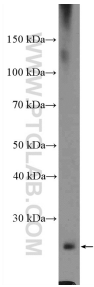
Selected Validation Data



Immunohistochemical analysis of paraffin-embedded human breast cancer tissue slide using 26735-1-AP (CYBRD1 antibody) at dilution of 1:400 (under 10x lens. Heat mediated antigen retrieval with Tris-EDTA buffer (pH 9.0)).



Immunohistochemical analysis of paraffin-embedded human breast cancer tissue slide using 26735-1-AP (CYBRD1 antibody) at dilution of 1:400 (under 40x lens. Heat mediated antigen retrieval with Tris-EDTA buffer (pH 9.0)).



COLO 320 cells were subjected to SDS PAGE followed by western blot with 26735-1-AP (CYBRD1 Antibody) at dilution of 1:1500 incubated at room temperature for 1.5 hours.