

For Research Use Only

# GPBAR1 Polyclonal antibody

Catalog Number: 26739-1-AP

2 Publications



## Basic Information

<b>Catalog Number:</b> 26739-1-AP	<b>GenBank Accession Number:</b> BC033625	<b>Purification Method:</b> Antigen affinity purification
<b>Size:</b> 150ul , Concentration: 1000 ug/ml by Nanodrop;	<b>GeneID (NCBI):</b> 151306	<b>Recommended Dilutions:</b> WB 1:500-1:1000
<b>Source:</b> Rabbit	<b>UNIPROT ID:</b> Q8TDU6	
<b>Isotype:</b> IgG	<b>Full Name:</b> G protein-coupled bile acid receptor 1	
<b>Immunogen Catalog Number:</b> AG24893	<b>Calculated MW:</b> 35 kDa	
	<b>Observed MW:</b> 32 kDa	

## Applications

<b>Tested Applications:</b> WB, ELISA	<b>Positive Controls:</b> WB : Caco-2 cells,
<b>Cited Applications:</b> WB, IHC	
<b>Species Specificity:</b> human	
<b>Cited Species:</b> human	

## Background Information

GPBAR1 (G-protein coupled bile acid receptor 1), also known as TGR5 or M-BAR, is a cell-surface receptor for bile acid which belongs to the G-protein coupled receptor 1 family (20236244). GPBAR1 gene expression is widely distributed, including endocrine glands, adipocytes, muscles, immune organs, spinal cord, and the enteric nervous system (24411485, 20665558, 22521118). GPBAR1 activation has some important biological effects such as anti-inflammatory, energy homeostasis and metabolism, anti-apoptotic, and choleretic functions (24411485, 22521118). In addition, GPBAR1 is related to several diseases, such as Metabolic and cardiovascular disorders, Hepatic and pancreatic disorders, Inflammatory bowel diseases, Gastrointestinal cancer, and so on (24411485).

## Notable Publications

Author	Pubmed ID	Journal	Application
Zhiqiang Chen	39515098	Phytomedicine	WB,IHC
Li Sun	39111149	Int Immunopharmacol	WB

## Storage

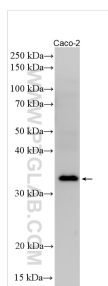
**Storage:**  
Store at -20°C. Stable for one year after shipment.  
**Storage Buffer:**  
PBS with 0.02% sodium azide and 50% glycerol  
Aliquoting is unnecessary for -20°C storage

\*\*\* 20ul sizes contain 0.1% BSA

For technical support and original validation data for this product please contact:  
T: 1 (888) 4PTGLAB (1-888-478-4522) (toll free in USA), or 1(312) 455-8498 (outside USA)  
E: [proteintech@ptglab.com](mailto:proteintech@ptglab.com)  
W: [ptglab.com](http://ptglab.com)

This product is exclusively available under Proteintech Group brand and is not available to purchase from any other manufacturer.

## Selected Validation Data



Various lysates were subjected to SDS PAGE followed by western blot with 26739-1-AP (GPBAR1 antibody) at dilution of 1:800 incubated at room temperature for 1.5 hours.