

For Research Use Only

# ENTPD5 Polyclonal antibody

Catalog Number: 26746-1-AP



## Basic Information

<b>Catalog Number:</b> 26746-1-AP	<b>GenBank Accession Number:</b> BC130485	<b>Purification Method:</b> Antigen affinity purification
<b>Size:</b> 150ul , Concentration: 1000 µg/ml by Nanodrop and 333 µg/ml by Bradford method using BSA as the standard;	<b>GeneID (NCBI):</b> 957	<b>Recommended Dilutions:</b> WB 1:500-1:2000 IP 0.5-4.0 ug for IP and 1:200-1:1000 for WB
<b>Source:</b> Rabbit	<b>Full Name:</b> ectonucleoside triphosphate diphosphohydrolase 5	<b>IHC 1:50-1:500</b>
<b>Isotype:</b> IgG	<b>Observed MW:</b> 47 kDa	
<b>Immunogen Catalog Number:</b> AG25022		

## Applications

<b>Tested Applications:</b> IHC, IP, WB, ELISA	<b>Positive Controls:</b>
<b>Species Specificity:</b> human, mouse	<b>WB:</b> mouse liver tissue,
<b>Note-IHC: suggested antigen retrieval with TE buffer pH 9.0; (*) Alternatively, antigen retrieval may be performed with citrate buffer pH 6.0</b>	<b>IP:</b> mouse liver tissue,
	<b>IHC:</b> human liver tissue,

## Background Information

### Storage

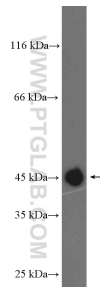
**Storage:**  
Store at -20°C. Stable for one year after shipment.  
**Storage Buffer:**  
PBS with 0.02% sodium azide and 50% glycerol pH 7.3.  
Aliquoting is unnecessary for -20°C storage

\*\*\* 20ul sizes contain 0.1% BSA

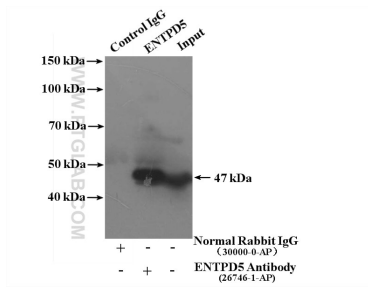
For technical support and original validation data for this product please contact:  
T: 1 (888) 4PTGLAB (1-888-478-4522) (toll free in USA), or 1(312) 455-8498 (outside USA) E: proteintech@ptglab.com W: ptglab.com

This product is exclusively available under Proteintech Group brand and is not available to purchase from any other manufacturer.

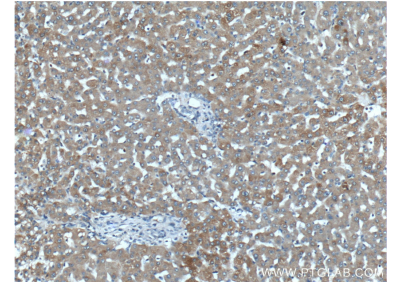
## Selected Validation Data



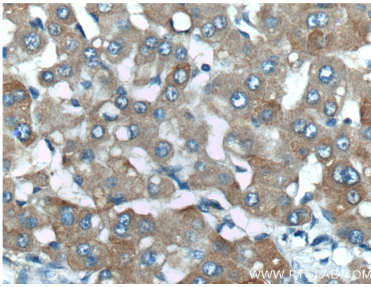
mouse liver tissue were subjected to SDS PAGE followed by western blot with 26746-1-AP (ENTPD5 Antibody) at dilution of 1:1000 incubated at room temperature for 1.5 hours.



IP Result of anti-ENTPD5 (IP:26746-1-AP, 4ug; Detection:26746-1-AP 1:300) with mouse liver tissue lysate 6000ug.



Immunohistochemical analysis of paraffin-embedded human liver tissue slide using 26746-1-AP (ENTPD5 Antibody) at dilution of 1:200 (under 10x lens).



Immunohistochemical analysis of paraffin-embedded human liver tissue slide using 26746-1-AP (ENTPD5 Antibody) at dilution of 1:200 (under 40x lens).