

For Research Use Only

# DIRC2 Polyclonal antibody

Catalog Number: 26750-1-AP

1 Publications



## Basic Information

Catalog Number:

26750-1-AP

Size:

150ul , Concentration: 900 ug/ml by Nanodrop and 467 ug/ml by Bradford method using BSA as the standard;

Source:

Rabbit

Isotype:

IgG

Immunogen Catalog Number:

AG24687

GenBank Accession Number:

BC039821

GeneID (NCBI):

84925

UNIPROT ID:

Q96SL1

Full Name:

disrupted in renal carcinoma 2

Calculated MW:

478 aa, 52 kDa

Observed MW:

48-52 kDa

Purification Method:

Antigen affinity purification

Recommended Dilutions:

WB 1:500-1:2000

## Applications

Tested Applications:

WB, ELISA

Cited Applications:

WB

Species Specificity:

human, mouse

Cited Species:

human

Positive Controls:

WB : MCF-7 cells, PC-3 cells

## Notable Publications

| Author | Pubmed ID | Journal | Application |
|--------|-----------|---------|-------------|
| Wei Ye | 39346078  | PeerJ   | WB          |

## Storage

Storage:

Store at -20°C. Stable for one year after shipment.

Storage Buffer:

PBS with 0.02% sodium azide and 50% glycerol pH 7.3.

Aliquoting is unnecessary for -20°C storage

\*\*\* 20ul sizes contain 0.1% BSA

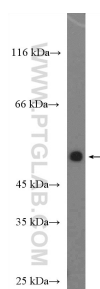
For technical support and original validation data for this product please contact:

T: 1 (888) 4PTGLAB (1-888-478-4522) (toll free in USA), or 1(312) 455-8498 (outside USA)

E: [proteintech@ptglab.com](mailto:proteintech@ptglab.com)  
W: [ptglab.com](http://ptglab.com)

This product is exclusively available under Proteintech Group brand and is not available to purchase from any other manufacturer.

## Selected Validation Data



MCF-7 cells were subjected to SDS PAGE followed by western blot with 26750-1-AP (DIRC2 Antibody) at dilution of 1:1000 incubated at room temperature for 1.5 hours.