

For Research Use Only

Cyclin D3 Polyclonal antibody

Catalog Number: 26755-1-AP

Featured Product

36 Publications



Basic Information

Catalog Number:

26755-1-AP

Size:

150ul, Concentration: 1000 ug/ml by Nanodrop and 500 ug/ml by Bradford method using BSA as the standard;

Source:

Rabbit

Isotype:

IgG

Immunogen Catalog Number:

AG25151

GenBank Accession Number:

BC011616

GeneID (NCBI):

896

ENSEMBL Gene ID:

ENSG00000112576

UNIPROT ID:

P30281

Full Name:

cyclin D3

Calculated MW:

33 kDa

Observed MW:

33 kDa

Purification Method:

Antigen affinity purification

Recommended Dilutions:

WB 1:500-1:2000

IP 0.5-4.0 ug for 1.0-3.0 mg of total protein lysate

IHC 1:50-1:500

IF/ICC 1:50-1:500

Applications

Tested Applications:

WB, IHC, IF/ICC, IP, ELISA

Cited Applications:

WB, IHC, IP

Species Specificity:

human, rat

Cited Species:

human, mouse, rat, sheep

Note-IHC: suggested antigen retrieval with TE buffer pH 9.0; (*) Alternatively, antigen retrieval may be performed with citrate buffer pH 6.0

Positive Controls:

WB: C6 cells, K-562 cells, Jurkat cells, HeLa cells

IP: K-562 cells,

IHC: human pancreas tissue, rat kidney tissue

IF/ICC: HeLa cells,

Background Information

Cyclin D3 belongs to the highly conserved cyclin family, whose members are characterized by a dramatic periodicity in protein abundance through the cell cycle. Cyclins function as regulators of CDK kinases. Different cyclins exhibit distinct expression and degradation patterns which contribute to the temporal coordination of each mitotic event. This cyclin forms a complex with and functions as a regulatory subunit of CDK4 or CDK6, whose activity is required for cell cycle G1/S transition. This protein has been shown to interact with and be involved in the phosphorylation of tumor suppressor protein Rb. The CDK4 activity associated with this cyclin was reported to be necessary for cell cycle progression through G2 phase into mitosis after UV radiation.

Notable Publications

Author	Pubmed ID	Journal	Application
Alireza Delfarah	34637314	J Proteome Res	WB
Li Ma	33045308	Mol Cell Endocrinol	WB
Weijing He	33209975	Mol Ther Oncolytics	WB

Storage

Storage:

Store at -20°C. Stable for one year after shipment.

Storage Buffer:

PBS with 0.02% sodium azide and 50% glycerol pH 7.3.

Aliquoting is unnecessary for -20°C storage

*** 20ul sizes contain 0.1% BSA

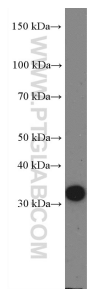
For technical support and original validation data for this product please contact:

T: 1 (888) 4PTGLAB (1-888-478-4522) (toll free in USA), or 1(312) 455-8498 (outside USA)

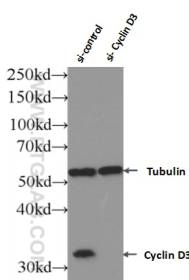
E: proteintech@ptglab.com
W: ptglab.com

This product is exclusively available under Proteintech Group brand and is not available to purchase from any other manufacturer.

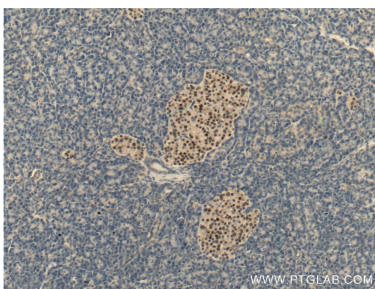
Selected Validation Data



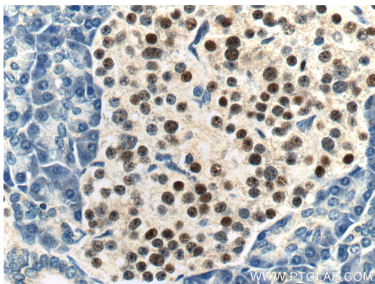
C6 cells were subjected to SDS PAGE followed by western blot with 26755-1-AP (Cyclin D3 Antibody) at dilution of 1:1000 incubated at room temperature for 1.5 hours.



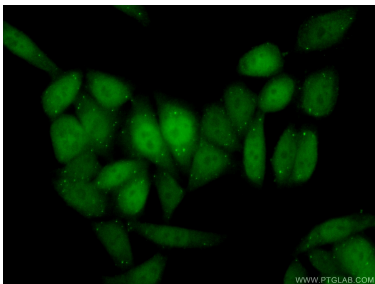
WB result of Cyclin D3 antibody (26755-1-AP; 1:10000; incubated at room temperature for 1.5 hours) with sh-Control and sh-Cyclin D3 transfected Jurkat cells.



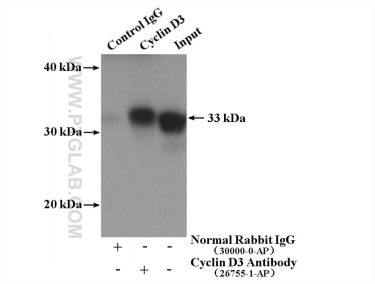
Immunohistochemical analysis of paraffin-embedded human pancreas tissue slide using 26755-1-AP (Cyclin D3 Antibody) at dilution of 1:200 (under 10x lens).



Immunohistochemical analysis of paraffin-embedded human pancreas tissue slide using 26755-1-AP (Cyclin D3 Antibody) at dilution of 1:200 (under 40x lens).



Immunofluorescent analysis of (10% Formaldehyde) fixed HeLa cells using 26755-1-AP (Cyclin D3 antibody) at dilution of 1:50 and Alexa Fluor 488-conjugated Goat Anti-Rabbit IgG(H+L).



IP result of anti-Cyclin D3 (IP:26755-1-AP, 4ug; Detection:26755-1-AP 1:1000) with K-562 cells lysate 2800ug.