

For Research Use Only

LIF Polyclonal antibody, PBS Only

Catalog Number: 26757-1-PBS



Basic Information

Catalog Number:

26757-1-PBS

Size:

100ug , Concentration: 1 mg/ml by Nanodrop;

Source:

Rabbit

Isotype:

IgG

Immunogen Catalog Number:

AG25076

GenBank Accession Number:

BC093733

GeneID (NCBI):

3976

UNIPROT ID:

P15018

Full Name:

leukemia inhibitory factor
(cholinergic differentiation factor)

Calculated MW:

202 aa, 22 kDa

Observed MW:

22 kDa

Purification Method:

Antigen affinity purification

Applications

Tested Applications:

WB, IHC, IF/ICC, IF-P, ELISA

Species Specificity:

human, mouse

Background Information

LIF is a pleiotropic cytokine with roles in several different systems. It is involved in the induction of hematopoietic differentiation in normal and myeloid leukemia cells, induction of neuronal cell differentiation, regulator of mesenchymal to epithelial conversion during kidney development, and may also have a role in immune tolerance at the maternal-fetal interface.

Storage

Storage:

Store at -80°C.

Storage Buffer:

PBS only, pH7.3

For technical support and original validation data for this product please contact:

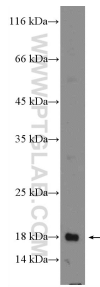
T: 1 (888) 4PTGLAB (1-888-478-4522) (toll free in USA), or 1(312) 455-8498 (outside USA)

E: proteintech@ptglab.com

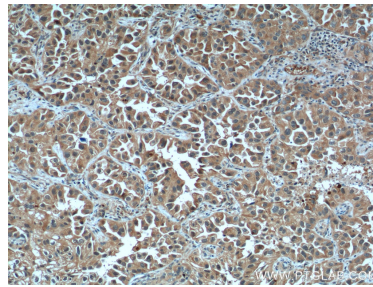
W: ptglab.com

This product is exclusively available under Proteintech Group brand and is not available to purchase from any other manufacturer.

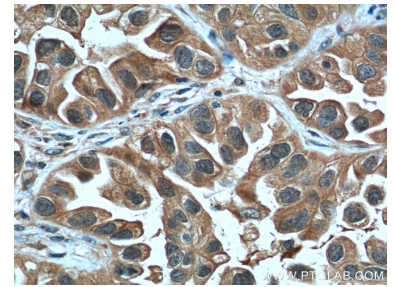
Selected Validation Data



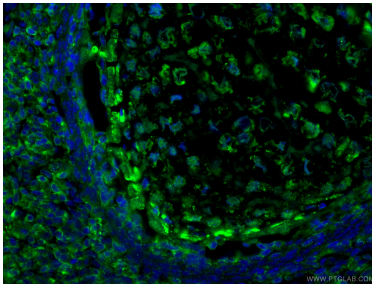
Jurkat cells were subjected to SDS PAGE followed by western blot with 26757-1-AP (LIF Antibody) at dilution of 1:300 incubated at room temperature for 1.5 hours. This data was developed using the same antibody clone with 26757-1-PBS in a different storage buffer formulation.



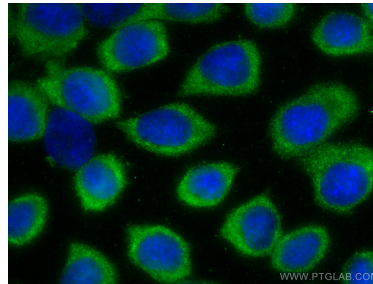
Immunohistochemical analysis of paraffin-embedded human lung cancer tissue slide using 26757-1-AP (LIF Antibody) at dilution of 1:200 (under 10x lens). Heat mediated antigen retrieval with Tris-EDTA buffer (pH 9.0). This data was developed using the same antibody clone with 26757-1-PBS in a different storage buffer formulation.



Immunohistochemical analysis of paraffin-embedded human lung cancer tissue slide using 26757-1-AP (LIF Antibody) at dilution of 1:200 (under 40x lens). Heat mediated antigen retrieval with Tris-EDTA buffer (pH 9.0). This data was developed using the same antibody clone with 26757-1-PBS in a different storage buffer formulation.



Immunofluorescent analysis of (4% PFA) fixed mouse embryo tissue using LIF antibody (26757-1-AP) at dilution of 1:200 and CoraLite®488-Conjugated AffiniPure Goat Anti-Rabbit IgG(H+L). This data was developed using the same antibody clone with 26757-1-PBS in a different storage buffer formulation.



Immunofluorescent analysis of (-20°C Methanol) fixed A431 cells using LIF antibody (26757-1-AP) at dilution of 1:200 and CoraLite®488-Conjugated AffiniPure Goat Anti-Rabbit IgG(H+L). This data was developed using the same antibody clone with 26757-1-PBS in a different storage buffer formulation.