

For Research Use Only

# SUFU Polyclonal antibody

Catalog Number: 26759-1-AP

Featured Product

10 Publications



## Basic Information

### Catalog Number:

26759-1-AP

### Size:

150ul, Concentration: 600 ug/ml by Nanodrop and 433 ug/ml by Bradford method using BSA as the standard;

### Source:

Rabbit

### Isotype:

IgG

### Immunogen Catalog Number:

AG25200

### GenBank Accession Number:

BC013291

### GeneID (NCBI):

51684

### UNIPROT ID:

Q9UMX1

### Full Name:

suppressor of fused homolog (Drosophila)

### Calculated MW:

54 kDa

### Observed MW:

50 kDa

### Purification Method:

Antigen affinity purification

### Recommended Dilutions:

WB 1:1000-1:4000

IP 0.5-4.0 ug for 1.0-3.0 mg of total protein lysate

IHC 1:50-1:500

IF/ICC 1:50-1:500

## Applications

### Tested Applications:

WB, IHC, IF/ICC, FC (Intra), IP, ELISA

### Cited Applications:

WB, IHC, IF

### Species Specificity:

human, mouse, rat

### Cited Species:

human, mouse, rat

**Note-IHC: suggested antigen retrieval with TE buffer pH 9.0; (\*) Alternatively, antigen retrieval may be performed with citrate buffer pH 6.0**

### Positive Controls:

WB : HeLa cells, C6 cells, HEK-293 cells, NIH/3T3 cells

IP : NIH/3T3 cells,

IHC : human kidney tissue,

IF/ICC : HeLa cells,

## Background Information

Sufu (Suppressor of fused) is a central regulator of Hh (Hedgehog) signaling and acts as a tumor suppressor by maintaining the Gli (Glioma-associated oncogene homolog) transcription factors inactive. Loss of Sufu function promotes tumorigenesis.

## Notable Publications

Author	Pubmed ID	Journal	Application
Xiao Ding	31519191	J Exp Clin Cancer Res	WB,IHC
Leah Schembs	35584663	Cell Rep	IF
Liwei Zhang	32550895	Theranostics	WB

## Storage

### Storage:

Store at -20°C. Stable for one year after shipment.

### Storage Buffer:

PBS with 0.02% sodium azide and 50% glycerol pH 7.3.

Aliquoting is unnecessary for -20°C storage

\*\*\* 20ul sizes contain 0.1% BSA

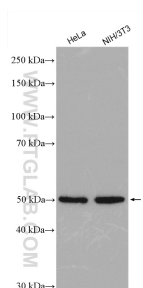
For technical support and original validation data for this product please contact:

T: 1 (888) 4PTGLAB (1-888-478-4522) (toll free in USA), or 1(312) 455-8498 (outside USA)

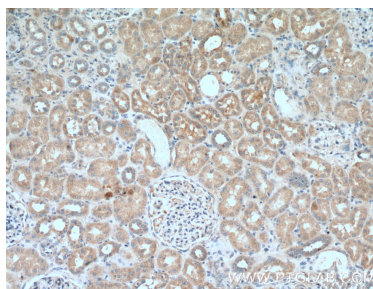
E: [proteintech@ptglab.com](mailto:proteintech@ptglab.com)  
W: [ptglab.com](http://ptglab.com)

This product is exclusively available under Proteintech Group brand and is not available to purchase from any other manufacturer.

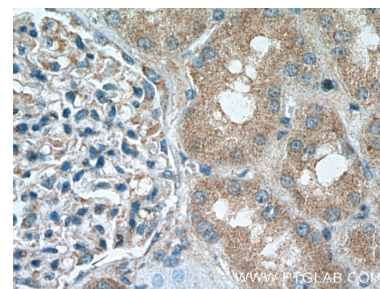
## Selected Validation Data



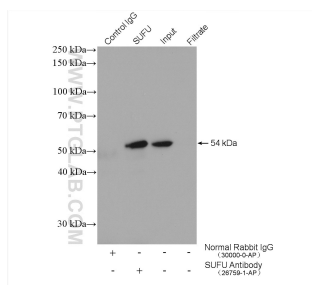
Various lysates were subjected to SDS PAGE followed by western blot with 26759-1-AP (SUFU antibody) at dilution of 1:2000 incubated at room temperature for 1.5 hours.



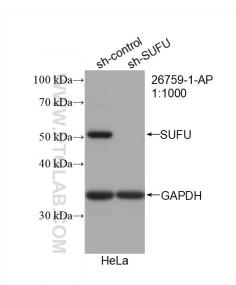
Immunohistochemical analysis of paraffin-embedded human kidney tissue slide using 26759-1-AP (SUFU Antibody) at dilution of 1:200 (under 10x lens).



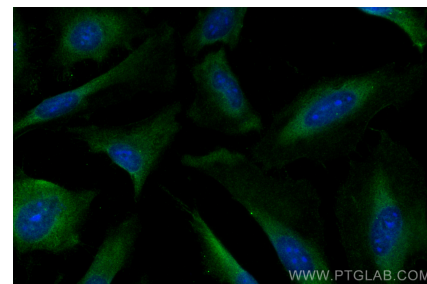
Immunohistochemical analysis of paraffin-embedded human kidney tissue slide using 26759-1-AP (SUFU Antibody) at dilution of 1:200 (under 40x lens).



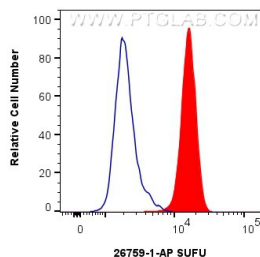
IP result of anti-SUFU (IP: 26759-1-AP, 4ug; Detection: 26759-1-AP 1:1000) with NIH/3T3 cells lysate 1600 ug.



WB result of SUFU antibody (26759-1-AP; 1:1000; incubated at room temperature for 1.5 hours) with sh-Control and sh-SUFU transfected HeLa cells.



Immunofluorescent analysis of (-20°C Ethanol) fixed HeLa cells using SUFU antibody (26759-1-AP) at dilution of 1:200 and CoraLite®488-Conjugated AffiniPure Goat Anti-Rabbit IgG(H+L).



1x10<sup>6</sup> HEK-293 cells were intracellularly stained with 0.25 ug SUFU Polyclonal antibody (26759-1-AP) and CoraLite®488-Conjugated Goat Anti-Rabbit IgG(H+L) (SA00013-2)(red), or 0.25 ug Rabbit IgG control Rabbit PolyAb (30000-O-AP) (blue). Cells were fixed with 4% PFA and permeabilized with Flow Cytometry Perm Buffer (PF00011-C).