

For Research Use Only

mCherry Polyclonal antibody

Catalog Number: 26765-1-AP

95 Publications



Basic Information

Catalog Number:

26765-1-AP

Size:

150ul, Concentration: 700 ug/ml by Nanodrop;

Source:

Rabbit

Isotype:

IgG

Immunogen Catalog Number:

AG25320

GenBank Accession Number:

GeneID (NCBI):

Full Name:

Calculated MW:

27 kDa

Purification Method:

Antigen affinity purification

Recommended Dilutions:

WB 1:1000-1:4000

IP 0.5-4.0 ug for 1.0-3.0 mg of total protein lysate

IF/ICC 1:400-1:1600

Applications

Tested Applications:

WB, IF/ICC, IP, ELISA

Cited Applications:

WB, IHC, IF, IP, CoIP

Species Specificity:

recombinant protein

Cited Species:

human, mouse, rabbit, zebrafish, yeast, plant, d. punctatus

Positive Controls:

WB : Transfected HEK-293 cells, Recombinant protein

IP : Transfected HEK-293T cells,

IF/ICC : Transfected HEK-293 cells,

Background Information

Red fluorescent proteins (RFPs) is a collective term referring to a heterogenous group of red chromophore-carrying proteins, originating from various species and forming different protein lineages. The original RFP (dsRed) is a 225 amino acid fluorescent protein (25.9 kDa) derived from *Discosoma* sp.. It emits red light with a peak wavelength of 593 nm upon excitation by green light (excitation peak at 558 nm). When fused with other proteins, RFP serves as a versatile reporter protein e.g. for quantifying expression levels or facilitates visualization of subcellular localization through fluorescence microscopy. This antibody is a rabbit polyclonal antibody raised against mCherry. It can be used to detect mCherry, dsRed, tdTomato, and mScarlet.

Notable Publications

Author	Pubmed ID	Journal	Application
Rong Zhou	36117989	iScience	IF
Xiaodong Wang	34890460	Plant Physiol	IF, CoIP
Xiaoqiang Zhu	36314411	Adv Mater	WB

Storage

Storage:

Store at -20°C. Stable for one year after shipment.

Storage Buffer:

PBS with 0.02% sodium azide and 50% glycerol, pH7.3

Aliquoting is unnecessary for -20°C storage

*** 20ul sizes contain 0.1% BSA

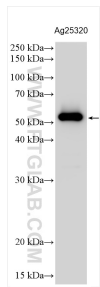
For technical support and original validation data for this product please contact:

T: 1 (888) 4PTGLAB (1-888-478-4522) (toll free in USA), or 1(312) 455-8498 (outside USA)

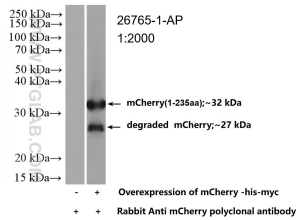
E: proteintech@ptglab.com
W: ptglab.com

This product is exclusively available under Proteintech Group brand and is not available to purchase from any other manufacturer.

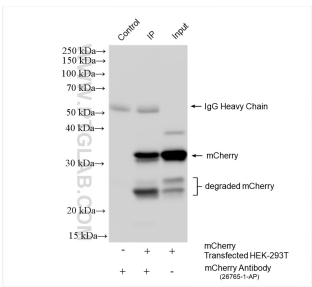
Selected Validation Data



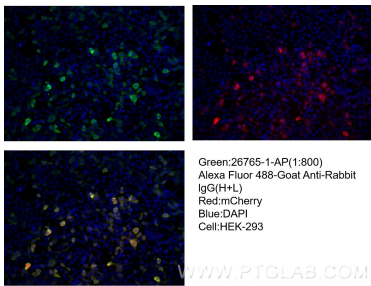
mCherry tagged protein was subjected to SDS PAGE followed by western blot with 26765-1-AP (mCherry antibody) at dilution of 1:8000 incubated at room temperature for 1.5 hours.



WB result of mCherry antibody (26765-1-AP; 1:2000; room temperature for 1.5 hours) with negative control and mCherry overexpressed Transfected HEK-293 cells.



IP result of anti-mCherry (IP:26765-1-AP, 4ug; Detection:26765-1-AP 1:2000) with Transfected HEK-293T cells lysate 1280 ug.



Immunofluorescent analysis of (-20°C Ethanol) fixed Transfected HEK-293 cells using mCherry antibody (26765-1-AP) at dilution of 1:800 and CoraLite®488-Conjugated AffiniPure Goat Anti-Rabbit IgG(H+L).