

For Research Use Only

mCherry Polyclonal antibody, PBS Only

Catalog Number: 26765-1-PBS



Basic Information

Catalog Number:

26765-1-PBS

Size:

100ug, Concentration: 1 mg/ml by Nanodrop;

Source:

Rabbit

Isotype:

IgG

Immunogen Catalog Number:

AG25320

GenBank Accession Number:

GeneID (NCBI):

Full Name:

Calculated MW:

27 kDa

Purification Method:

Antigen affinity purification

Applications

Tested Applications:

WB, IF/ICC, IP, Indirect ELISA

Species Specificity:

recombinant protein

Background Information

Red fluorescent proteins (RFPs) is a collective term referring to a heterogenous group of red chromophore-carrying proteins, originating from various species and forming different protein lineages. The original RFP (dsRed) is a 225 amino acid fluorescent protein (25.9 kDa) derived from *Discosoma* sp.. It emits red light with a peak wavelength of 593 nm upon excitation by green light (excitation peak at 558 nm). When fused with other proteins, RFP serves as a versatile reporter protein e.g. for quantifying expression levels or facilitates visualization of subcellular localization through fluorescence microscopy. This antibody is a rabbit polyclonal antibody raised against mCherry. It can be used to detect mCherry, dsRed, tdTomato, and mScarlet.

Storage

Storage:

Store at -80°C.

Storage Buffer:

PBS only, pH7.3

For technical support and original validation data for this product please contact:

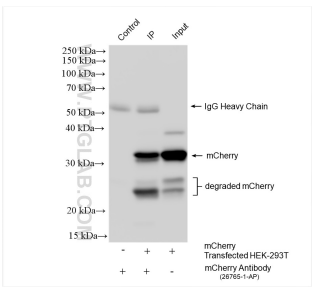
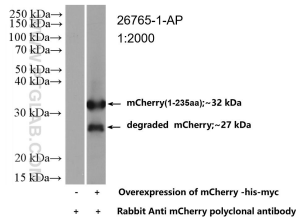
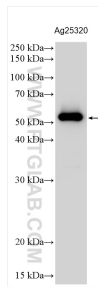
T: 1 (888) 4PTGLAB (1-888-478-4522) (toll free in USA), or 1(312) 455-8498 (outside USA)

E: proteintech@ptglab.com

W: ptglab.com

This product is exclusively available under Proteintech Group brand and is not available to purchase from any other manufacturer.

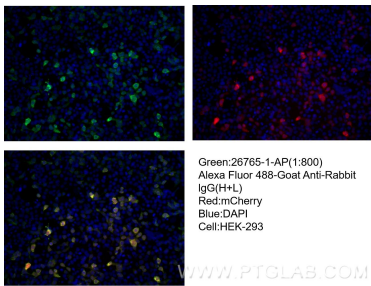
Selected Validation Data



mCherry tagged protein was subjected to SDS PAGE followed by western blot with 26765-1-AP (mCherry antibody) at dilution of 1:8000 incubated at room temperature for 1.5 hours. This data was developed using the same antibody clone with 26765-1-PBS in a different storage buffer formulation.

WB result of mCherry antibody (26765-1-AP; 1:2000; room temperature for 1.5 hours) with negative control and mCherry overexpressed Transfected HEK-293 cells. This data was developed using the same antibody clone with 26765-1-PBS in a different storage buffer formulation.

IP result of anti-mCherry (IP:26765-1-AP, 4ug; Detection:26765-1-AP 1:2000) with Transfected HEK-293T cells lysate 1280 ug. This data was developed using the same antibody clone with 26765-1-PBS in a different storage buffer formulation.



Immunofluorescent analysis of (-20°C Ethanol) fixed Transfected HEK-293 cells using mCherry antibody (26765-1-AP) at dilution of 1:800 and CoraLite®488-Conjugated AffiniPure Goat Anti-Rabbit IgG(H+L). This data was developed using the same antibody clone with 26765-1-PBS in a different storage buffer formulation.