

For Research Use Only

GRLF1 Polyclonal antibody

Catalog Number: 26789-1-AP

Featured Product

4 Publications



Basic Information

Catalog Number:

26789-1-AP

Size:

150ul, Concentration: 1000 ug/ml by Nanodrop and 600 ug/ml by Bradford method using BSA as the standard;

Source:

Rabbit

Isotype:

IgG

Immunogen Catalog Number:

AG25353

GenBank Accession Number:

BC150257

GeneID (NCBI):

2909

UNIPROT ID:

Q9NRY4

Full Name:

glucocorticoid receptor DNA binding factor 1

Observed MW:

172 kDa

Purification Method:

Antigen affinity purification

Recommended Dilutions:

WB 1:2000-1:12000

IHC 1:50-1:500

Applications

Tested Applications:

WB, IHC, ELISA

Cited Applications:

WB, IF

Species Specificity:

human

Cited Species:

human, mouse

Note-IHC: suggested antigen retrieval with TE buffer pH 9.0; (*) Alternatively, antigen retrieval may be performed with citrate buffer pH 6.0

Positive Controls:

WB : A549 cells, HeLa cells

IHC : human colon tissue, human brain tissue

Background Information

GRLF1 is also named as ARHGAP35, p190ARHOGAP, KIAA1722, P190A and GRF1. GRLF1 is a kind of Rho GTPase-activating protein, and it binds several acidic phospholipids which inhibits the Rho GAP activity to promote the Rac GAP activity (PMID:19673492). This binding is inhibited by phosphorylation by PRKCA (PMID:19673492). GRLF1 is involved in cell differentiation as well as cell adhesion and migration. And it plays an important role in retinal tissue morphogenesis, neural tube fusion, midline fusion of the cerebral hemispheres and mammary gland branching morphogenesis.

Notable Publications

Author	Pubmed ID	Journal	Application
Daici Chen	31332286	Oncogene	WB,IF
Zhixiong Liu	35143418	J Clin Invest	WB
Xuemeng Shi	33928090	Front Cell Dev Biol	WB

Storage

Storage:

Store at -20°C. Stable for one year after shipment.

Storage Buffer:

PBS with 0.02% sodium azide and 50% glycerol pH 7.3.

Aliquoting is unnecessary for -20°C storage

*** 20ul sizes contain 0.1% BSA

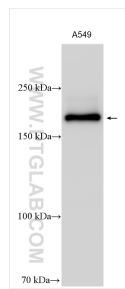
For technical support and original validation data for this product please contact:

T: 1 (888) 4PTGLAB (1-888-478-4522) (toll free in USA), or 1(312) 455-8498 (outside USA)

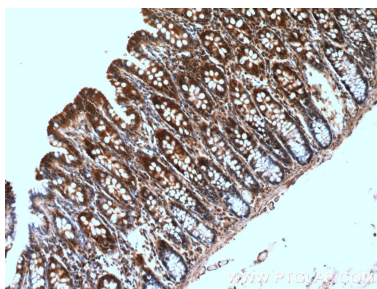
E: proteintech@ptglab.com
W: ptglab.com

This product is exclusively available under Proteintech Group brand and is not available to purchase from any other manufacturer.

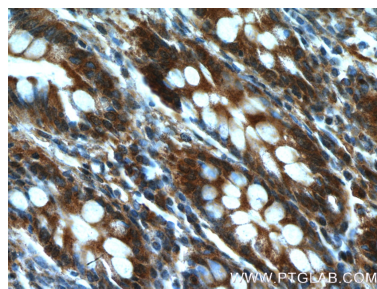
Selected Validation Data



A549 cells were subjected to SDS PAGE followed by western blot with 26789-1-AP (GRLF1 antibody) at dilution of 1:6000 incubated at room temperature for 1.5 hours.



Immunohistochemical analysis of paraffin-embedded human colon tissue slide using 26789-1-AP (GRLF1 antibody) at dilution of 1:200 (under 10x lens).



Immunohistochemical analysis of paraffin-embedded human colon tissue slide using 26789-1-AP (GRLF1 antibody) at dilution of 1:200 (under 40x lens).