

For Research Use Only

CXCL2 Polyclonal antibody

Catalog Number: 26791-1-AP

8 Publications



Basic Information

Catalog Number:

26791-1-AP

Size:

150ul, Concentration: 600 ug/ml by Nanodrop;

Source:

Rabbit

Isotype:

IgG

Immunogen Catalog Number:

AG25376

GenBank Accession Number:

BC015753

GeneID (NCBI):

2920

UNIPROT ID:

P19875

Full Name:

chemokine (C-X-C motif) ligand 2

Calculated MW:

107 aa, 11 kDa

Observed MW:

11 kDa

Purification Method:

Antigen affinity purification

Recommended Dilutions:

WB 1:500-1:1000

Applications

Tested Applications:

WB, ELISA

Cited Applications:

WB, IF

Species Specificity:

human, mouse, rat

Cited Species:

human, mouse, rat

Positive Controls:

WB : HepG2 cells, human milk, rat lung tissue, mouse lung tissue

Background Information

CXCL2, also known as macrophage inflammatory protein 2-alpha (MIP2-alpha), is a member of CXC chemokine family that binds to CXC chemokine receptor 2 (CXCR2). CXCL2 is mainly produced by macrophages, endothelial cells, epithelial cells and tumor cells. CXCL2 plays important roles in various biological progresses such as angiogenesis, inflammation, immune response and cancer biological behaviors. Under inflammatory conditions in CNS, microglia and astrocytes may secrete CXCL2 as well as other chemokines, which induces chemotaxis and infiltration of circulatory neutrophils. Indeed, previous studies suggest that CXCL2 is involved in Alzheimer disease, multiple sclerosis and brain ischemia.

Notable Publications

Author	Pubmed ID	Journal	Application
Lu Wang	34555641	Int Immunopharmacol	WB
Guozhen Wang	34507947	J Immunol	WB
Shuang Ge	34830293	Int J Mol Sci	IF

Storage

Storage:

Store at -20°C. Stable for one year after shipment.

Storage Buffer:

PBS with 0.02% sodium azide and 50% glycerol pH 7.3.

Aliquoting is unnecessary for -20°C storage

*** 20ul sizes contain 0.1% BSA

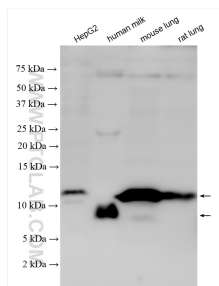
For technical support and original validation data for this product please contact:

T: 1 (888) 4PTGLAB (1-888-478-4522) (toll free in USA), or 1(312) 455-8498 (outside USA)

E: proteintech@ptglab.com
W: ptglab.com

This product is exclusively available under Proteintech Group brand and is not available to purchase from any other manufacturer.

Selected Validation Data



Various lysates were subjected to SDS PAGE followed by western blot with 26791-1-AP (CXCL2 antibody) at dilution of 1:500 incubated at room temperature for 1.5 hours.