

For Research Use Only

SIPA1 Polyclonal antibody

Catalog Number: 26793-1-AP

1 Publications



Basic Information

Catalog Number: 26793-1-AP	GenBank Accession Number: BC010492	Purification Method: Antigen affinity purification
Size: 150ul , Concentration: 1000 ug/ml by Nanodrop and 567 ug/ml by Bradford method using BSA as the standard;	GeneID (NCBI): 6494	Recommended Dilutions: WB 1:1000-1:6000 IHC 1:50-1:500 IF/ICC 1:200-1:800
Source: Rabbit	UNIPROT ID: Q96FS4	
Isotype: IgG	Full Name: signal-induced proliferation-associated 1	
Immunogen Catalog Number: AG25383	Calculated MW: 1042 aa, 112 kDa	
	Observed MW: 130 kDa	

Applications

Tested Applications: WB, IHC, IF/ICC, ELISA	Positive Controls:
Cited Applications: WB, IHC	WB : Raji cells, HEK-293T cells
Species Specificity: human	IHC : human ovary cancer tissue,
Cited Species: human	IF/ICC : MCF-7 cells,

Note-IHC: suggested antigen retrieval with TE buffer pH 9.0; (*) Alternatively, antigen retrieval may be performed with citrate buffer pH 6.0

Background Information

SIPA1 (Signal-induced proliferation-associated protein 1) is also named as SPA1, p130 SPA-1 and GTPase-activating protein Spa-1. SIPA1, a GTPase activating protein, was discovered in proliferating lymphocytes as mitogen-induced nuclear protein. SIPA1 promotes catalyzation of hydrolyze Rap1GTP/GDP and is known to be a negative regulator of Ras-related protein, which transduces the signals for various cellular functions, including development, cellular proliferation, and cellular adhesion (PMID:28237246). Transcription of fibronectin 1, which is crucial for cell junction and migration of triple-negative breast cancer (TNBC) cells, was regulated by SIPA1 in a DBR-dependent manner. SIPA1 was highly expressed in metastatic TNBC. SIPA1 served as a TF, promoting TNBC migration, invasion, and metastasis (PMID: 37500797).

Notable Publications

Author	Pubmed ID	Journal	Application
Xinlu Liu	35303583	Transl Oncol	WB,IHC

Storage

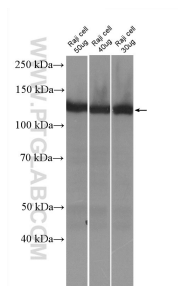
Storage:
Store at -20°C. Stable for one year after shipment.
Storage Buffer:
PBS with 0.02% sodium azide and 50% glycerol pH 7.3.
Aliquoting is unnecessary for -20°C storage

*** 20ul sizes contain 0.1% BSA

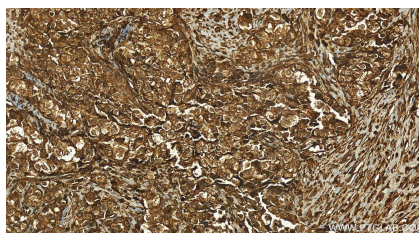
For technical support and original validation data for this product please contact:
T: 1 (888) 4PTGLAB (1-888-478-4522) (toll free in USA), or 1(312) 455-8498 (outside USA)
E: proteintech@ptglab.com
W: ptglab.com

This product is exclusively available under Proteintech Group brand and is not available to purchase from any other manufacturer.

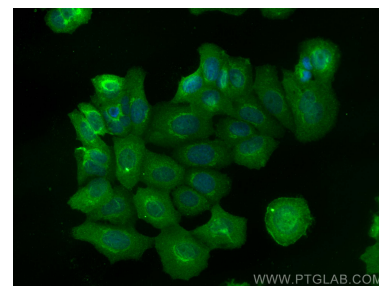
Selected Validation Data



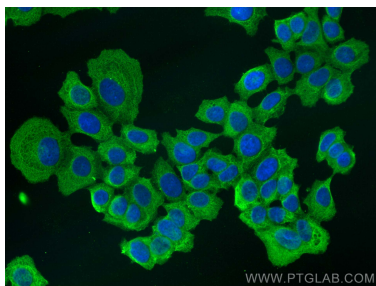
Raji cells were subjected to SDS PAGE followed by western blot with 26793-1-AP (SIPA1 antibody) at dilution of 1:3000 incubated at room temperature for 1.5 hours.



Immunohistochemical analysis of paraffin-embedded human ovary cancer tissue slide using 26793-1-AP (SIPA1 antibody) at dilution of 1:200 (under 20x lens). Heat mediated antigen retrieval with Tris-EDTA buffer (pH 9.0).



Immunofluorescent analysis of (4% PFA) fixed MCF-7 cells using SIPA1 antibody (26793-1-AP) at dilution of 1:400 and CoraLite®488-Conjugated AffiniPure Goat Anti-Rabbit IgG(H+L).



Immunofluorescent analysis of (-20°C Methanol) fixed MCF-7 cells using SIPA1 antibody (26793-1-AP) at dilution of 1:400 and CoraLite®488-Conjugated AffiniPure Goat Anti-Rabbit IgG(H+L).