

For Research Use Only

# SLC39A1/ZIP1 Polyclonal antibody, PBS Only

Catalog Number: 26799-1-PBS



## Basic Information

<b>Catalog Number:</b> 26799-1-PBS	<b>GenBank Accession Number:</b> BC003152	<b>Purification Method:</b> Antigen affinity purification
<b>Size:</b> 100ug , Concentration: 1 mg/ml by Nanodrop;	<b>GeneID (NCBI):</b> 27173	
<b>Source:</b> Rabbit	<b>UNIPROT ID:</b> Q9NY26	
<b>Isotype:</b> IgG	<b>Full Name:</b> solute carrier family 39 (zinc transporter), member 1	
<b>Immunogen Catalog Number:</b> AG24937	<b>Calculated MW:</b> 324 aa, 34 kDa	
	<b>Observed MW:</b> 34 kDa	

## Applications

**Tested Applications:**  
WB, Indirect ELISA

**Species Specificity:**  
human

## Background Information

SLC39A1, also known as ZIP1, is a member of the zinc-iron permease family. It is localized to the cell membrane and acts as a zinc uptake transporter. SLC39A1 mediates the influx of Zn<sup>2+</sup> into cells from extracellular space (PMID: 16844077). SLC39A1 is the major importer of zinc from circulating blood plasma into prostate cells (PMID: 12888280). In mesenchymal stem cells (MSCs), ZIP1 may exist as a dimer with a molecular weight of 70kD (PMID: 16203195).

## Storage

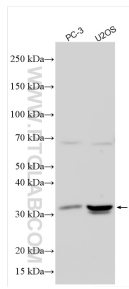
**Storage:**  
Store at -80°C.

**Storage Buffer:**  
PBS only, pH7.3

For technical support and original validation data for this product please contact:  
T: 1 (888) 4PTGLAB (1-888-478-4522) (toll free in USA), or 1(312) 455-8498 (outside USA)      E: proteintech@ptglab.com  
W: ptglab.com

This product is exclusively available under Proteintech Group brand and is not available to purchase from any other manufacturer.

## Selected Validation Data



Various lysates were subjected to SDS PAGE followed by western blot with 26799-1-AP (ZIP1 antibody) at dilution of 1:2000 incubated at room temperature for 1.5 hours. This data was developed using the same antibody clone with 26799-1-PBS in a different storage buffer formulation.