

For Research Use Only

SLC25A12 Polyclonal antibody

Catalog Number: 26804-1-AP



Basic Information

Catalog Number:

26804-1-AP

Size:

150ul, Concentration: 260 ug/ml by Nanodrop and 200 ug/ml by Bradford method using BSA as the standard;

Source:

Rabbit

Isotype:

IgG

Immunogen Catalog Number:

AG25150

GenBank Accession Number:

BC016932

GeneID (NCBI):

8604

UNIPROT ID:

O75746

Full Name:

solute carrier family 25 (mitochondrial carrier, Aralar), member 12

Calculated MW:

75 kDa, 63 kDa

Observed MW:

63 kDa

Purification Method:

Antigen affinity purification

Recommended Dilutions:

WB 1:1000-1:4000

IHC 1:50-1:500

IF-P 1:50-1:500

Applications

Tested Applications:

WB, IHC, IF-P, ELISA

Species Specificity:

human, mouse, rat

Note-IHC: suggested antigen retrieval with TE buffer pH 9.0; (*) Alternatively, antigen retrieval may be performed with citrate buffer pH 6.0

Positive Controls:

WB : mouse heart tissue, mouse kidney tissue, mouse skeletal muscle tissue, rat heart tissue

IHC : human breast cancer tissue, human pancreas cancer tissue, human stomach cancer tissue, mouse kidney tissue

IF-P : mouse heart tissue,

Storage

Storage:

Store at -20°C. Stable for one year after shipment.

Storage Buffer:

PBS with 0.02% sodium azide and 50% glycerol pH 7.3.

Aliquoting is unnecessary for -20°C storage

*** 20ul sizes contain 0.1% BSA

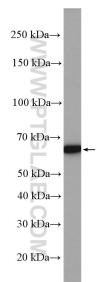
For technical support and original validation data for this product please contact:

T: 1 (888) 4PTGLAB (1-888-478-4522) (toll free in USA), or 1(312) 455-8498 (outside USA)

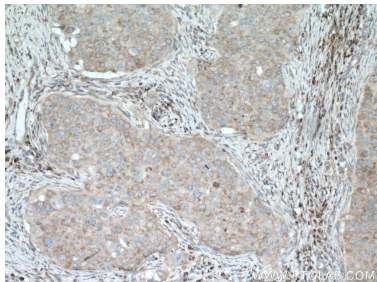
E: proteintech@ptglab.com
W: ptglab.com

This product is exclusively available under Proteintech Group brand and is not available to purchase from any other manufacturer.

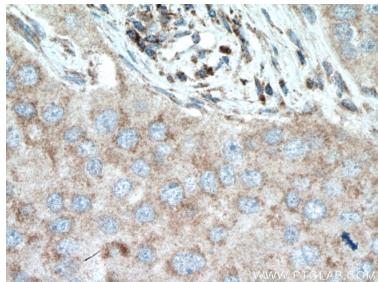
Selected Validation Data



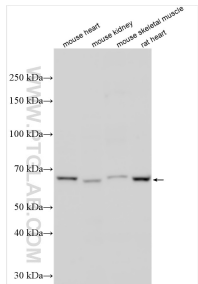
mouse skeletal muscle tissue were subjected to SDS PAGE followed by western blot with 26804-1-AP (SLC25A12 antibody) at dilution of 1:1000 incubated at room temperature for 1.5 hours.



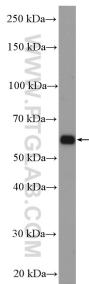
Immunohistochemical analysis of paraffin-embedded human breast cancer tissue slide using 26804-1-AP (SLC25A12 antibody) at dilution of 1:200 (under 10x lens. Heat mediated antigen retrieval with Tris-EDTA buffer (pH 9.0).



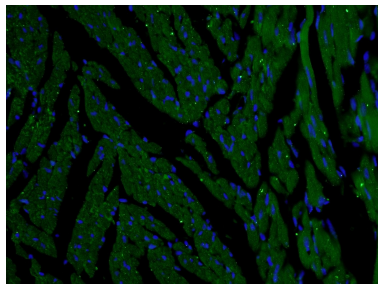
Immunohistochemical analysis of paraffin-embedded human breast cancer tissue slide using 26804-1-AP (SLC25A12 antibody) at dilution of 1:200 (under 40x lens. Heat mediated antigen retrieval with Tris-EDTA buffer (pH 9.0).



Various lysates were subjected to SDS PAGE followed by western blot with 26804-1-AP (SLC25A12 antibody) at dilution of 1:2000 incubated at room temperature for 1.5 hours.



mouse kidney tissue were subjected to SDS PAGE followed by western blot with 26804-1-AP (SLC25A12 antibody) at dilution of 1:1000 incubated at room temperature for 1.5 hours.



Immunofluorescent analysis of (4% PFA) fixed tissue using 26804-1-AP (SLC25A12 antibody) at dilution of 1:50 and Alexa Fluor 488-conjugated Goat Anti-Rabbit IgG(H+L).