

For Research Use Only

CDK12/CRKRS Polyclonal antibody

Catalog Number: 26816-1-AP

Featured Product

9 Publications



Basic Information

Catalog Number:

26816-1-AP

Size:

150ul, Concentration: 1200 ug/ml by Nanodrop;

Source:

Rabbit

Isotype:

IgG

Immunogen Catalog Number:

AG25323

GenBank Accession Number:

BC150265

GeneID (NCBI):

51755

UNIPROT ID:

Q9NYV4

Full Name:

Cdc2-related kinase, arginine/serine-rich

Calculated MW:

1490 aa, 164 kDa

Observed MW:

180-200 kDa

Purification Method:

Antigen affinity purification

Recommended Dilutions:

WB 1:2000-1:16000

IF/ICC 1:300-1:1200

Applications

Tested Applications:

WB, IF/ICC, ELISA

Cited Applications:

WB, IP

Species Specificity:

human

Cited Species:

human, mouse

Positive Controls:

WB : HeLa cells, K-562 cells, Jurkat cells

IF/ICC : A431 cells,

Background Information

CRKRS (Cdc2-related kinase, Arg/Ser), also named as cyclin-dependent kinase 12 (CKD12), belongs to CDC2/CDKX subfamily. CDK12 can form a heterodimeric complex with its activating partner, cyclin K, to regulate important cellular physiological processes that include transcriptional regulation, regulation of DNA damage repair genes such as BRCA1 and ATM, suppression of intronic polyadenylation, and susceptibility to PARP inhibitors (PMID: 30487607, 24240700, 31694772). CDK12 has 3 isoforms with the calculated molecular mass of 164/163/141 kDa, and the apparent molecular mass of 180-200 kDa due to some modifications (PMID 11683387, 22988298).

Notable Publications

| Author | Pubmed ID | Journal | Application |
|---------------------|-----------|-------------------|-------------|
| Yan Liang | 34686673 | Cell Death Discov | WB |
| Hui Li | 33429148 | Eur J Cancer | WB |
| Mareike Polenkowski | 36590164 | iScience | WB |

Storage

Storage:

Store at -20°C. Stable for one year after shipment.

Storage Buffer:

PBS with 0.02% sodium azide and 50% glycerol pH 7.3.

Aliquoting is unnecessary for -20°C storage

*** 20ul sizes contain 0.1% BSA

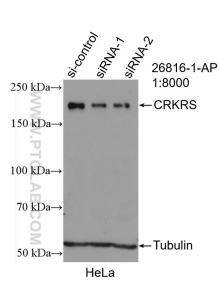
For technical support and original validation data for this product please contact:

T: 1 (888) 4PTGLAB (1-888-478-4522) (toll free in USA), or 1(312) 455-8498 (outside USA)

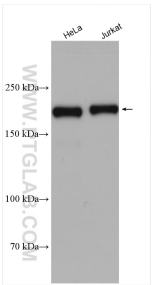
E: proteintech@ptglab.com
W: ptglab.com

This product is exclusively available under Proteintech Group brand and is not available to purchase from any other manufacturer.

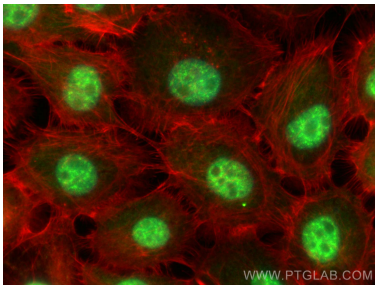
Selected Validation Data



WB result of CDK12/CRKRS antibody (26816-1-AP; 1:8000; incubated at room temperature for 1.5 hours) with sh-Control and sh-CDK12/CRKRS transfected HeLa cells.



Various lysates were subjected to SDS PAGE followed by western blot with 26816-1-AP (CDK12/CRKRS antibody) at dilution of 1:8000 incubated at room temperature for 1.5 hours.



Immunofluorescent analysis of (4% PFA) fixed A431 cells using CDK12/CRKRS antibody (26816-1-AP) at dilution of 1:600 and CoraLite®488-Conjugated AffiniPure Goat Anti-Rabbit IgG(H+L) (SA00013-2), CL594-phalloidin (red).