

For Research Use Only

CPA4 Polyclonal antibody

Catalog Number: 26824-1-AP

4 Publications



Basic Information

Catalog Number:

26824-1-AP

Size:

150ul, Concentration: 1000 ug/ml by Nanodrop and 533 ug/ml by Bradford method using BSA as the standard;

Source:

Rabbit

Isotype:

IgG

Immunogen Catalog Number:

AG25327

GenBank Accession Number:

BC052289

GeneID (NCBI):

51200

UNIPROT ID:

Q9UI42

Full Name:

carboxypeptidase A4

Calculated MW:

421 aa, 47 kDa

Observed MW:

44 kDa, 150 kDa

Purification Method:

Antigen affinity purification

Recommended Dilutions:

WB 1:500-1:1000

IHC 1:100-1:400

Applications

Tested Applications:

WB, IHC, ELISA

Cited Applications:

WB, IHC

Species Specificity:

human, mouse

Cited Species:

human, mouse

Note-IHC: suggested antigen retrieval with TE buffer pH 9.0; (*) Alternatively, antigen retrieval may be performed with citrate buffer pH 6.0

Positive Controls:

WB : mouse heart tissue, SMMC-7721 cells, mouse kidney tissue, A549 cells, HepG2 cells

IHC : human lung cancer tissue,

Background Information

Carboxypeptidase A4 (CPA4), a member of the metallo-carboxypeptidase family, is a zinc-containing exopeptidase that catalyzes the release of carboxy-terminal amino acids. CPA4 was previously shown to play a crucial role in cell growth and differentiation by modulating or inactivating peptide hormone activity (PMID: 27904708). CPA4 expression is increased in multiple cancer tissues, including tissues from patients with pancreatic cancer, gastric cancer, esophageal squamous cell carcinoma, and lung cancer, and may serve as a potential diagnostic and prognostic marker (PMID: 31397502, 32922037).

Notable Publications

Author	Pubmed ID	Journal	Application
Fernanda G Kugeratski	30723174	Sci Signal	WB
Kongjia Wang	38494845	J Cell Mol Med	IHC
Luoling Wang	38049405	Cell Death Dis	WB

Storage

Storage:

Store at -20°C. Stable for one year after shipment.

Storage Buffer:

PBS with 0.02% sodium azide and 50% glycerol pH 7.3.

Aliquoting is unnecessary for -20°C storage

*** 20ul sizes contain 0.1% BSA

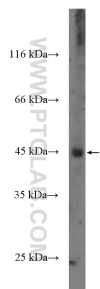
For technical support and original validation data for this product please contact:

T: 1 (888) 4PTGLAB (1-888-478-4522) (toll free in USA), or 1(312) 455-8498 (outside USA)

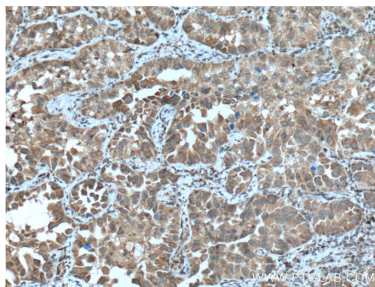
E: proteintech@ptglab.com
W: ptglab.com

This product is exclusively available under Proteintech Group brand and is not available to purchase from any other manufacturer.

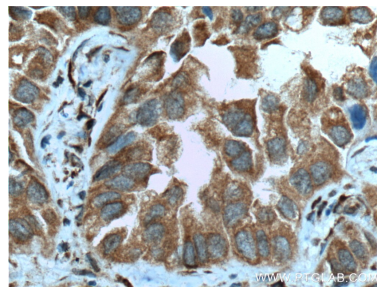
Selected Validation Data



mouse heart tissue were subjected to SDS PAGE followed by western blot with 26824-1-AP (CPA4 Antibody) at dilution of 1:600 incubated at room temperature for 1.5 hours.



Immunohistochemical analysis of paraffin-embedded human lung cancer tissue slide using 26824-1-AP (CPA4 Antibody) at dilution of 1:200 (under 10x lens). Heat mediated antigen retrieval with Tris-EDTA buffer (pH 9.0).



Immunohistochemical analysis of paraffin-embedded human lung cancer tissue slide using 26824-1-AP (CPA4 Antibody) at dilution of 1:200 (under 40x lens). Heat mediated antigen retrieval with Tris-EDTA buffer (pH 9.0).