

For Research Use Only

SLC12A9 Polyclonal antibody

Catalog Number: 26827-1-AP



Basic Information

Catalog Number:

26827-1-AP

Size:

150ul, Concentration: 450 ug/ml by Nanodrop;

Source:

Rabbit

Isotype:

IgG

Immunogen Catalog Number:

AG25351

GenBank Accession Number:

BC000154

GeneID (NCBI):

56996

UNIPROT ID:

Q9BXP2

Full Name:

solute carrier family 12 (potassium/chloride transporters), member 9

Calculated MW:

96 kDa

Observed MW:

101 kDa

Purification Method:

Antigen affinity purification

Recommended Dilutions:

WB 1:500-1:2000

Applications

Tested Applications:

WB, ELISA

Species Specificity:

human, mouse

Positive Controls:

WB : HEK-293 cells, MCF-7 cells, LNCaP cells, mouse kidney tissue

Background Information

SLC12A9, also known as CCC6 and CIP1, belongs to the SLC12A transporter family. SLC12A9 encodes a 914 amino acid protein with predicted 12 TM domains, two N-glycosylation sites between TM5 and TM6, and a carboxyl terminus PKC phosphorylation site (PMID: 23506871). SLC12A9 regulates ion gradients across renal tubules and maintains cell volume (PMID: 27530302). SLC12A9 is highly expressed in placenta, brain, and kidney.

Storage

Storage:

Store at -20°C. Stable for one year after shipment.

Storage Buffer:

PBS with 0.02% sodium azide and 50% glycerol pH 7.3.

Aliquoting is unnecessary for -20°C storage

*** 20ul sizes contain 0.1% BSA

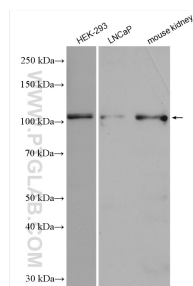
For technical support and original validation data for this product please contact:

T: 1 (888) 4PTGLAB (1-888-478-4522) (toll free in USA), or 1(312) 455-8498 (outside USA)

E: proteintech@ptglab.com
W: ptglab.com

This product is exclusively available under Proteintech Group brand and is not available to purchase from any other manufacturer.

Selected Validation Data



Various lysates were subjected to SDS PAGE followed by western blot with 26827-1-AP (SLC12A9 antibody) at dilution of 1:1000 incubated at room temperature for 1.5 hours.