

For Research Use Only

# SUSD4 Polyclonal antibody

Catalog Number: 26829-1-AP



## Basic Information

<b>Catalog Number:</b> 26829-1-AP	<b>GenBank Accession Number:</b> BC004888	<b>Purification Method:</b> Antigen affinity purification
<b>Size:</b> 150ul , Concentration: 350 ug/ml by Nanodrop;	<b>GeneID (NCBI):</b> 55061	<b>Recommended Dilutions:</b> WB 1:500-1:3000 IHC 1:50-1:500 IF-P 1:50-1:500
<b>Source:</b> Rabbit	<b>UNIPROT ID:</b> Q5VX71	
<b>Isotype:</b> IgG	<b>Full Name:</b> sushi domain containing 4	
<b>Immunogen Catalog Number:</b> AG25346	<b>Calculated MW:</b> 490 aa, 54 kDa	
	<b>Observed MW:</b> 54 kDa	

## Applications

<b>Tested Applications:</b> WB, IHC, IF-P, ELISA	<b>Positive Controls:</b>
<b>Species Specificity:</b> mouse	<b>WB :</b> MDA-MB-231 cells, TT cells, mouse brain tissue, rat brain tissue
<b>Note-IHC:</b> suggested antigen retrieval with <b>TE buffer pH 9.0; (*) Alternatively, antigen retrieval may be performed with citrate buffer pH 6.0</b>	<b>IHC :</b> mouse cerebellum tissue,
	<b>IF-P :</b> mouse cerebellum tissue,

## Background Information

The SUSD4 (Sushi domain-containing protein 4) gene resides on chromosome 1q41 and encodes a 49-kD transmembrane protein containing four extracellular Sushi domain motifs. The Sushi domain, also known as the complement control protein domain, is commonly involved in protein-protein interactions. Many complement regulators are constructed with complement control protein domains. SUSD4 functions as a complement system regulator, as it has been shown to bind to the C1 complex and complement component C1q and block the activation of the complement cascade by interrupting the formation of C3 convertase. (PMID: 32179479)

## Storage

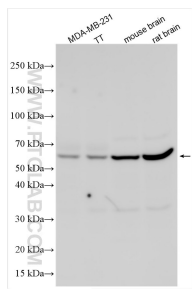
**Storage:**  
Store at -20°C. Stable for one year after shipment.  
**Storage Buffer:**  
PBS with 0.02% sodium azide and 50% glycerol pH 7.3.  
Aliquoting is unnecessary for -20°C storage

\*\*\* 20ul sizes contain 0.1% BSA

For technical support and original validation data for this product please contact:  
T: 1 (888) 4PTGLAB (1-888-478-4522) (toll free in USA), or 1(312) 455-8498 (outside USA)  
E: [proteintech@ptglab.com](mailto:proteintech@ptglab.com)  
W: [ptglab.com](http://ptglab.com)

This product is exclusively available under Proteintech Group brand and is not available to purchase from any other manufacturer.

## Selected Validation Data



Various lysates were subjected to SDS PAGE followed by western blot with 26829-1-AP (SUSD4 antibody) at dilution of 1:1500 incubated at room temperature for 1.5 hours.

