

For Research Use Only

HAPLN1 Polyclonal antibody

Catalog Number: 26831-1-AP



Basic Information

Catalog Number: 26831-1-AP	GenBank Accession Number: BC057808	Purification Method: Antigen affinity purification
Size: 150ul , Concentration: 350 ug/ml by Nanodrop;	GeneID (NCBI): 1404	Recommended Dilutions: IHC 1:50-1:500 IF/ICC 1:200-1:800
Source: Rabbit	UNIPROT ID: P10915	
Isotype: IgG	Full Name: hyaluronan and proteoglycan link protein 1	
Immunogen Catalog Number: AG25221	Calculated MW: 40 kDa	
	Observed MW: 40 kDa	

Applications

Tested Applications: IHC, IF/ICC, ELISA	Positive Controls:
Species Specificity: human, mouse	IHC : mouse placenta tissue, mouse cerebellum tissue
Note-IHC: suggested antigen retrieval with TE buffer pH 9.0; (*) Alternatively, antigen retrieval may be performed with citrate buffer pH 6.0	IF/ICC : U2OS cells,

Background Information

HAPLN1 (hyaluronan and proteoglycan link protein 1), also known as CRTL1. It is expected to be located in the cytoplasm and extracellular, and the protein is mainly expressed in placenta and small intestine. The calculated molecular weight of HAPLN1 is 40 kDa. HAPLN1 binds to aggrecan on the hyaluronic chain, stabilizing the aggregates and thus increasing compression resistance and shock absorption. HAPLN1 also functions as a growth factor, up regulating aggrecan and type II collagen synthesis in cartilage. It seems to be an essential part of cartilage homeostasis and may also contribute to homeostasis in the disc tissue (PMID: 23537453).

Storage

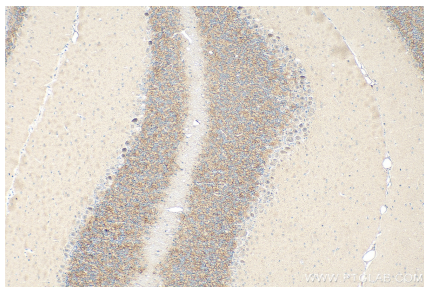
Storage:
Store at -20°C. Stable for one year after shipment.
Storage Buffer:
PBS with 0.02% sodium azide and 50% glycerol pH 7.3.
Aliquoting is unnecessary for -20°C storage

*** 20ul sizes contain 0.1% BSA

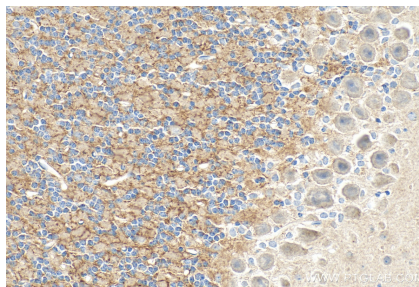
For technical support and original validation data for this product please contact:
T: 1 (888) 4PTGLAB (1-888-478-4522) (toll free in USA), or 1(312) 455-8498 (outside USA)
E: proteintech@ptglab.com
W: ptglab.com

This product is exclusively available under Proteintech Group brand and is not available to purchase from any other manufacturer.

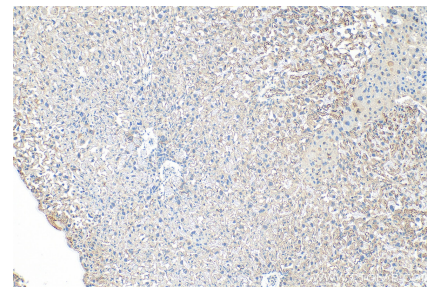
Selected Validation Data



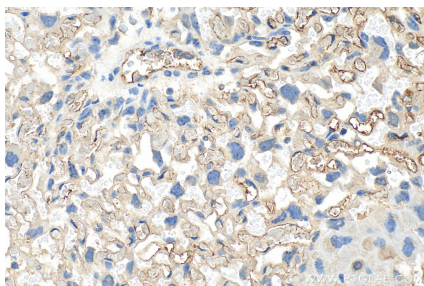
Immunohistochemical analysis of paraffin-embedded mouse cerebellum tissue slide using 26831-1-AP (HAPLN1 antibody) at dilution of 1:200 (under 10x lens). Heat mediated antigen retrieval with Tris-EDTA buffer (pH 9.0).



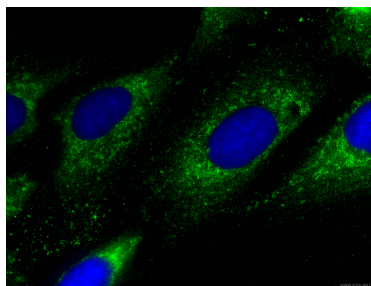
Immunohistochemical analysis of paraffin-embedded mouse cerebellum tissue slide using 26831-1-AP (HAPLN1 antibody) at dilution of 1:200 (under 40x lens). Heat mediated antigen retrieval with Tris-EDTA buffer (pH 9.0).



Immunohistochemical analysis of paraffin-embedded mouse placenta tissue slide using 26831-1-AP (HAPLN1 antibody) at dilution of 1:200 (under 10x lens). Heat mediated antigen retrieval with Tris-EDTA buffer (pH 9.0).



Immunohistochemical analysis of paraffin-embedded mouse placenta tissue slide using 26831-1-AP (HAPLN1 antibody) at dilution of 1:200 (under 40x lens). Heat mediated antigen retrieval with Tris-EDTA buffer (pH 9.0).



Immunofluorescent analysis of (-20°C Methanol) fixed U2OS cells using HAPLN1 antibody (26831-1-AP) at dilution of 1:400 and CoraLite®488-Conjugated Goat Anti-Rabbit IgG(H+L).