

For Research Use Only

SLC22A16 Polyclonal antibody

Catalog Number: 26833-1-AP



Basic Information

Catalog Number: 26833-1-AP	GenBank Accession Number: BC047565	Purification Method: Antigen affinity purification
Size: 150ul , Concentration: 500 µg/ml by Nanodrop;	GeneID (NCBI): 85413	Recommended Dilutions: WB 1:1000-1:4000 IHC 1:50-1:500 IF 1:50-1:500
Source: Rabbit	Full Name: solute carrier family 22 (organic cation/carnitine transporter), member 16	
Isotype: IgG	Calculated MW: 65 kDa	
Immunogen Catalog Number: AG25270	Observed MW: 68 kDa	

Applications

Tested Applications:

IF, IHC, WB, ELISA

Species Specificity:

human

Note-IHC: suggested antigen retrieval with TE buffer pH 9.0; (*) Alternatively, antigen retrieval may be performed with citrate buffer pH 6.0

Positive Controls:

WB : MCF-7 cells, PC-3 cells

IHC : human breast cancer tissue, human stomach cancer tissue

IF : THP-1 cells,

Background Information

SLC22A16, also named as CT2, FLIPT2, or OCT6, belongs to the major facilitator (TC 2.A.1) superfamily and organic cation transporter (TC 2.A.1.19) family. SLC22A16 encodes an organic zwitterion transporter protein that transports carnitine and some anticancer drugs, including anthracyclines. As a carnitine transporter, SLC22A16 is involved in the regulation of fatty acid oxidation (FAO), which plays an important role also in the metabolic transformation of cancer cells. SLC22A16 expression in cancer cells is associated with increased sensitivity to the cytotoxic effects of doxorubicin. SLC22A16 has 3 isoforms with the molecular mass of 58, 61 and 65 kDa (PMID: 35761855, 35608746).

Storage

Storage:

Store at -20°C. Stable for one year after shipment.

Storage Buffer:

PBS with 0.02% sodium azide and 50% glycerol pH 7.3.

Aliquoting is unnecessary for -20°C storage

*** 20ul sizes contain 0.1% BSA

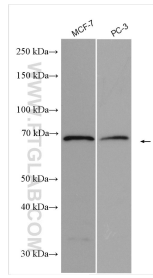
For technical support and original validation data for this product please contact:

T: 1 (888) 4PTGLAB (1-888-478-4522) (toll free in USA), or 1(312) 455-8498 (outside USA)

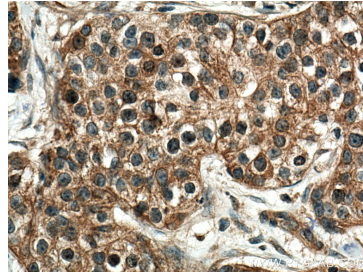
E: proteintech@ptglab.com
W: ptglab.com

This product is exclusively available under Proteintech Group brand and is not available to purchase from any other manufacturer.

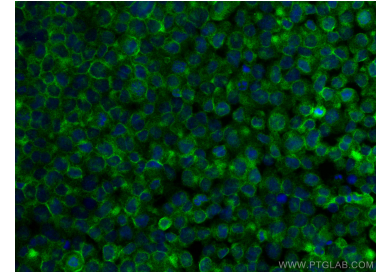
Selected Validation Data



Various lysates were subjected to SDS PAGE followed by western blot with 26833-1-AP (SLC22A16 antibody) at dilution of 1:2000 incubated at room temperature for 1.5 hours.



Immunohistochemical analysis of paraffin-embedded human breast cancer tissue slide using 26833-1-AP (SLC22A16 antibody) at dilution of 1:200 (under 40x lens). Heat mediated antigen retrieval with Tris-EDTA buffer (pH 9.0).



Immunofluorescent analysis of (4% PFA) fixed THP-1 cells using SLC22A16 antibody (26833-1-AP) at dilution of 1:200 and CoraLite®488-Conjugated AffiniPure Goat Anti-Rabbit IgG(H+L).