

For Research Use Only

FLVCR1 Polyclonal antibody

Catalog Number: 26841-1-AP

Featured Product

3 Publications



Basic Information

Catalog Number:

26841-1-AP

Size:

150ul, Concentration: 500 ug/ml by Nanodrop and 500 ug/ml by Bradford method using BSA as the standard;

Source:

Rabbit

Isotype:

IgG

Immunogen Catalog Number:

AG25220

GenBank Accession Number:

BC048312

GeneID (NCBI):

28982

UNIPROT ID:

Q9Y5Y0

Full Name:

feline leukemia virus subgroup C cellular receptor 1

Calculated MW:

60 kDa

Observed MW:

60 kDa~70 kDa

Purification Method:

Antigen affinity purification

Recommended Dilutions:

WB 1:500-1:1000

IP 0.5-4.0 ug for 1.0-3.0 mg of total protein lysate

IHC 1:50-1:500

IF/ICC 1:50-1:500

Applications

Tested Applications:

WB, IHC, IF/ICC, IP, ELISA

Cited Applications:

WB, IF, IP

Species Specificity:

human, mouse, rat

Cited Species:

human, mouse

Note-IHC: suggested antigen retrieval with TE buffer pH 9.0; (*) Alternatively, antigen retrieval may be performed with citrate buffer pH 6.0

Positive Controls:

WB: Jurkat cells, HepG2 cells, human placenta tissue, K-562 cells

IP: K-562 cells,

IHC: human breast cancer tissue, mouse kidney tissue

IF/ICC: Caco-2 cells,

Background Information

FLVCR1(feline leukemia virus subgroup C receptor 1) has been reported to have a crucial role in a variety of biological processes, including cell proliferation, cell death, apoptosis, oxidative stress response, cellular differentiation, and metabolism (PMID: 29532854). In addition, FLVCR1 can be applied as a clinical prognostic marker for patients with ESCC (PMID: 33842377).

Notable Publications

| Author | Pubmed ID | Journal | Application |
|-------------------|-----------|---------------------|-------------|
| Yan Qu | 39237990 | J Nanobiotechnology | WB |
| Francesca Bertino | 39019006 | Cell Rep Med | WB,IP,IF |
| Miriam Mistretta | 38412099 | Cell Rep | |

Storage

Storage:

Store at -20°C. Stable for one year after shipment.

Storage Buffer:

PBS with 0.02% sodium azide and 50% glycerol pH 7.3.

Aliquoting is unnecessary for -20°C storage

*** 20ul sizes contain 0.1% BSA

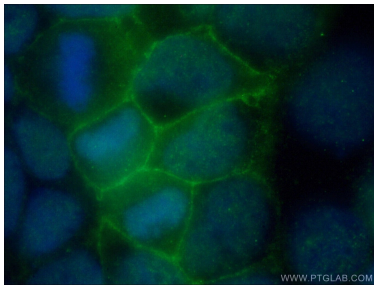
For technical support and original validation data for this product please contact:

T: 1 (888) 4PTGLAB (1-888-478-4522) (toll free in USA), or 1(312) 455-8498 (outside USA)

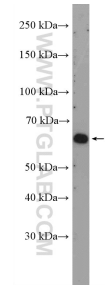
E: proteintech@ptglab.com
W: ptglab.com

This product is exclusively available under Proteintech Group brand and is not available to purchase from any other manufacturer.

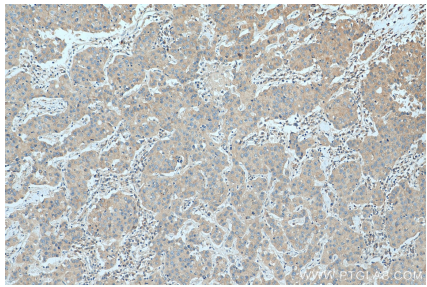
Selected Validation Data



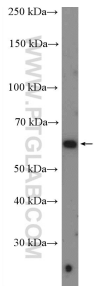
Immunofluorescent analysis of (-20°C Ethanol) fixed Caco-2 cells using 26841-1-AP (FLVCR1 antibody) at dilution of 1:50 and Alexa Fluor 488-Conjugated AffiniPure Goat Anti-Rabbit IgG(H+L).



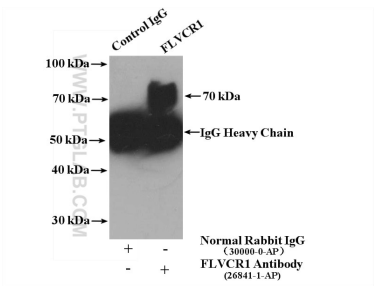
Jurkat cells were subjected to SDS PAGE followed by western blot with 26841-1-AP (FLVCR1 Antibody) at dilution of 1:600 incubated at room temperature for 1.5 hours.



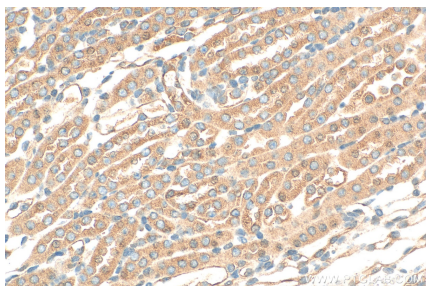
Immunohistochemical analysis of paraffin-embedded human breast cancer tissue slide using 26841-1-AP (FLVCR1 antibody) at dilution of 1:200 (under 10x lens). Heat mediated antigen retrieval with Tris-EDTA buffer (pH 9.0).



human placenta tissue were subjected to SDS PAGE followed by western blot with 26841-1-AP (FLVCR1 Antibody) at dilution of 1:600 incubated at room temperature for 1.5 hours.



IP result of anti-FLVCR1 (IP:26841-1-AP, 4ug; Detection:26841-1-AP 1:500) with K-562 cells lysate 4400 ug.



Immunohistochemical analysis of paraffin-embedded mouse kidney tissue slide using 26841-1-AP (FLVCR1 antibody) at dilution of 1:200 (under 40x lens). Heat mediated antigen retrieval with Tris-EDTA buffer (pH 9.0).