

For Research Use Only

CRH/CRF Polyclonal antibody

Catalog Number: 26848-1-AP

2 Publications



Basic Information

Catalog Number:

26848-1-AP

Size:

150ul, Concentration: 450 ug/ml by Nanodrop;

Source:

Rabbit

Isotype:

IgG

Immunogen Catalog Number:

AG25226

GenBank Accession Number:

BC011031

GeneID (NCBI):

1392

UNIPROT ID:

P06850

Full Name:

CRH/CRF

Calculated MW:

21 kDa

Observed MW:

27 kDa

Purification Method:

Antigen affinity purification

Recommended Dilutions:

WB 1:500-1:2000

IHC 1:400-1:1600

IF-P 1:200-1:800

Applications

Tested Applications:

WB, IHC, IF-P, ELISA

Cited Applications:

WB, IF

Species Specificity:

human, mouse, rat

Cited Species:

rat

Positive Controls:

WB : rat brain tissue, mouse brain tissue

IHC : human placenta tissue,

IF-P : rat brain tissue,

Note-IHC: suggested antigen retrieval with TE buffer pH 9.0; (*) Alternatively, antigen retrieval may be performed with citrate buffer pH 6.0

Background Information

CRH, also called CRF or corticotiberin, is a peptide hormone and neurotransmitter involved in the stress response. Marked reduction in this protein has been observed in association with Alzheimer disease. In addition to production in the hypothalamus, this protein is also synthesized in peripheral tissues, such as T lymphocytes and is highly expressed in the placenta. In the placenta it is a marker that determines the length of gestation and the timing of parturition and delivery.

Notable Publications

Author	Pubmed ID	Journal	Application
Yabin Lin	39929458	Int J Biol Macromol	IF
Xinyuan Wang	39593298	Food Res Int	WB

Storage

Storage:

Store at -20°C. Stable for one year after shipment.

Storage Buffer:

PBS with 0.02% sodium azide and 50% glycerol pH 7.3.

Aliquoting is unnecessary for -20°C storage

*** 20ul sizes contain 0.1% BSA

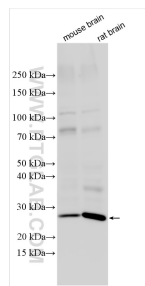
For technical support and original validation data for this product please contact:

T: 1 (888) 4PTGLAB (1-888-478-4522) (toll free in USA), or 1(312) 455-8498 (outside USA)

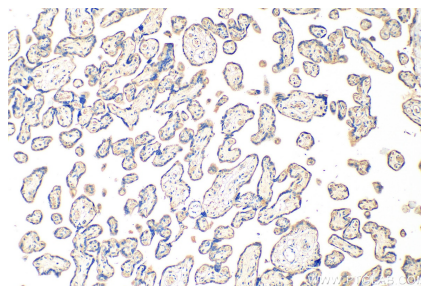
E: proteintech@ptglab.com
W: ptglab.com

This product is exclusively available under Proteintech Group brand and is not available to purchase from any other manufacturer.

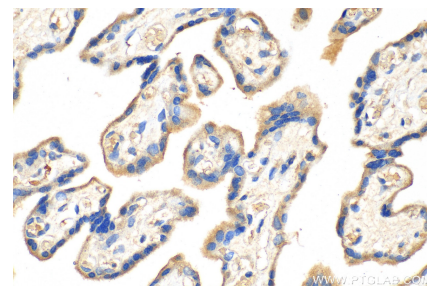
Selected Validation Data



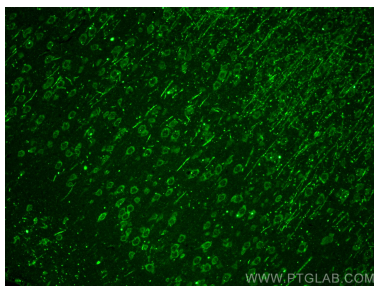
Various lysates were subjected to SDS PAGE followed by western blot with 26848-1-AP (CRH/CRF antibody) at dilution of 1:1000 incubated at room temperature for 1.5 hours.



Immunohistochemical analysis of paraffin-embedded human placenta tissue slide using 26848-1-AP (CRH/CRF antibody) at dilution of 1:800 (under 10x lens). Heat mediated antigen retrieval with Tris-EDTA buffer (pH 9.0).



Immunohistochemical analysis of paraffin-embedded human placenta tissue slide using 26848-1-AP (CRH/CRF antibody) at dilution of 1:800 (under 40x lens). Heat mediated antigen retrieval with Tris-EDTA buffer (pH 9.0).



Immunofluorescent analysis of (4% PFA) fixed rat brain tissue using CRH/CRF antibody (26848-1-AP) at dilution of 1:400 and CoraLite®488-Conjugated AffiniPure Goat Anti-Rabbit IgG(H+L).