

For Research Use Only

# RRP12 Polyclonal antibody

Catalog Number: 26849-1-AP



## Basic Information

**Catalog Number:**

26849-1-AP

**Size:**

150ul , Concentration: 500 ug/ml by Nanodrop;

**Source:**

Rabbit

**Isotype:**

IgG

**Immunogen Catalog Number:**

AG25271

**GenBank Accession Number:**

BC012745

**GeneID (NCBI):**

23223

**UNIPROT ID:**

Q5JTH9

**Full Name:**

ribosomal RNA processing 12 homolog (S. cerevisiae)

**Calculated MW:**

1297 aa, 144 kDa

**Observed MW:**

144-150 kDa

**Purification Method:**

Antigen affinity purification

**Recommended Dilutions:**

WB 1:20000-1:100000

IF/ICC 1:200-1:800

## Applications

**Tested Applications:**

WB, IF/ICC, ELISA

**Species Specificity:**

human

**Positive Controls:**

WB : HEK-293 cells, HeLa cells, HepG2 cells

IF/ICC : HeLa cells,

## Storage

**Storage:**

Store at -20°C. Stable for one year after shipment.

**Storage Buffer:**

PBS with 0.02% sodium azide and 50% glycerol pH 7.3.

Aliquoting is unnecessary for -20°C storage

\*\*\* 20ul sizes contain 0.1% BSA

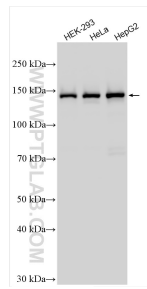
For technical support and original validation data for this product please contact:

T: 1 (888) 4PTGLAB (1-888-478-4522) (toll free in USA), or 1(312) 455-8498 (outside USA)

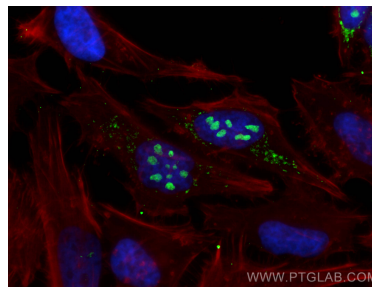
E: [proteintech@ptglab.com](mailto:proteintech@ptglab.com)  
W: [ptglab.com](http://ptglab.com)

This product is exclusively available under Proteintech Group brand and is not available to purchase from any other manufacturer.

## Selected Validation Data



Various lysates were subjected to SDS PAGE followed by western blot with 26849-1-AP (RRP12 antibody) at dilution of 1:50000 incubated at room temperature for 1.5 hours.



Immunofluorescent analysis of (4% PFA) fixed HeLa cells using RRP12 antibody (26849-1-AP) at dilution of 1:400 and CoraLite®488-Conjugated AffiniPure Goat Anti-Rabbit IgG(H+L), CL594-Phalloidin (red).