

For Research Use Only

LTBP1 Polyclonal antibody

Catalog Number: 26855-1-AP

Featured Product

4 Publications



Basic Information

Catalog Number: 26855-1-AP	GenBank Accession Number: BC130289	Purification Method: Antigen affinity purification
Size: 150ul , Concentration: 500 µg/ml by Nanodrop;	GeneID (NCBI): 4052	Recommended Dilutions: WB 1:500-1:3000 IHC 1:50-1:500 IF 1:50-1:500
Source: Rabbit	Full Name: latent transforming growth factor beta binding protein 1	
Isotype: IgG	Calculated MW: 1721 aa, 187 kDa	
Immunogen Catalog Number: AG25392	Observed MW: 150 kDa	

Applications

Tested Applications: IF, IHC, WB, ELISA	Positive Controls: WB : human plasma tissue, IHC : human breast cancer tissue, IF : HeLa cells,
Cited Applications: IF, IHC, WB	
Species Specificity: human	
Cited Species: human, mouse	

Note-IHC: suggested antigen retrieval with TE buffer pH 9.0; (*) Alternatively, antigen retrieval may be performed with citrate buffer pH 6.0

Background Information

Latent TGFβ binding protein 1 (LTBP1) is a large extracellular protein which belongs to the family of latent TGF-beta binding proteins (LTBPs). LTBP1 is essential for TGF-beta folding, secretion, matrix localization and activation. LTBP1 has also been demonstrated to interact with a number of insoluble extracellular matrix components, such as fibrillin. We got 150-240 kDa in western blotting due to protein glycosylation of LTBP1 (PMID: 18086923, PMID: 9923648).

Notable Publications

Author	Pubmed ID	Journal	Application
Mingqing Cui	34608122	Cell Death Discov	WB
Rui Cai	32216815	J Transl Med	WB, IHC
Rédouane Aherrahrou	37986932	medRxiv	IHC

Storage

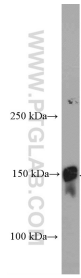
Storage:
Store at -20°C. Stable for one year after shipment.
Storage Buffer:
PBS with 0.02% sodium azide and 50% glycerol pH 7.3.
Aliquoting is unnecessary for -20°C storage

*** 20ul sizes contain 0.1% BSA

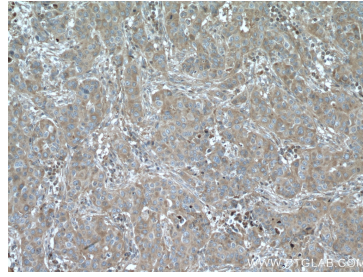
For technical support and original validation data for this product please contact:
T: 1 (888) 4PTGLAB (1-888-478-4522) (toll free in USA), or 1(312) 455-8498 (outside USA)
E: proteintech@ptglab.com
W: ptglab.com

This product is exclusively available under Proteintech Group brand and is not available to purchase from any other manufacturer.

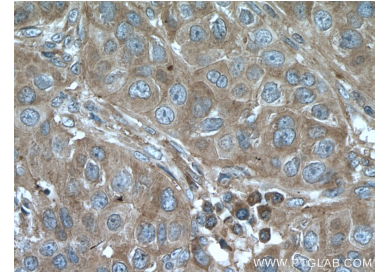
Selected Validation Data



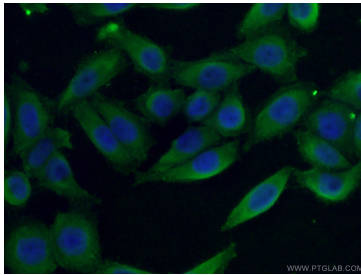
human plasma were subjected to SDS PAGE followed by western blot with 26855-1-AP (LTBP1 Antibody) at dilution of 1:1500 incubated at room temperature for 1.5 hours.



Immunohistochemical analysis of paraffin-embedded human breast cancer tissue slide using 26855-1-AP (LTBP1 antibody) at dilution of 1:200 (under 10x lens. Heat mediated antigen retrieval with Tris-EDTA buffer (pH 9.0).



Immunohistochemical analysis of paraffin-embedded human breast cancer tissue slide using 26855-1-AP (LTBP1 antibody) at dilution of 1:200 (under 40x lens. Heat mediated antigen retrieval with Tris-EDTA buffer (pH 9.0).



Immunofluorescent analysis of (4% PFA) fixed HeLa cells using 26855-1-AP (LTBP1 antibody) at dilution of 1:50 and Alexa Fluor 488-Conjugated AffiniPure Goat Anti-Rabbit IgG(H+L).