

For Research Use Only

# SLC7A11/xCT Polyclonal antibody

Catalog Number: 26864-1-AP

Featured Product

464 Publications



## Basic Information

### Catalog Number:

26864-1-AP

### Size:

150ul, Concentration: 700 ug/ml by Nanodrop;

### Source:

Rabbit

### Isotype:

IgG

### Immunogen Catalog Number:

AG25431

### GenBank Accession Number:

BC012087

### GeneID (NCBI):

23657

### UNIPROT ID:

Q9UPY5

### Full Name:

solute carrier family 7, (cationic amino acid transporter, y+ system) member 11

### Calculated MW:

55 kDa

### Observed MW:

35-40 kDa

### Purification Method:

Antigen affinity purification

### Recommended Dilutions:

WB 1:1000-1:4000

IP 0.5-4.0 ug for 1.0-3.0 mg of total protein lysate

IHC 1:50-1:500

## Applications

### Tested Applications:

WB, IHC, IP, ELISA

### Cited Applications:

WB, IHC, IF, IP, CoIP, RIP

### Species Specificity:

human

### Cited Species:

human, chicken, bovine, goat

### Positive Controls:

WB: unboiled HeLa cells, unboiled HepG2 cells

IP: A549 cells, HepG2 cells

IHC: human renal cell carcinoma tissue,

**Note-IHC: suggested antigen retrieval with TE buffer pH 9.0; (\*) Alternatively, antigen retrieval may be performed with citrate buffer pH 6.0**

## Background Information

SLC7A11 (also known as xCT) is a membrane transporter involved in the uptake of cystine. It promotes glutathione synthesis through the uptake of cystine and the concomitant release of glutamate. This, in turn, protects cells from oxidative stress, maintains cellular redox balance, and prevents cell death induced by lipid peroxidation. SLC7A11 has been identified as a potential target for cancer therapeutics. It is overexpressed in multiple malignant tumors and is closely associated with the growth, prognosis, metastasis, and treatment response of various cancers including lung cancer. 26864-1-AP recognizes the 35-40 kDa protein similar to the paper published (PMID: 36747082).

## Notable Publications

Author	Pubmed ID	Journal	Application
Yanan Zhao	36166594	J Agric Food Chem	WB
Ben Li	36290297	Biology (Basel)	WB
Shiao Tong	36156371	Transl Oncol	WB

## Storage

### Storage:

Store at -20°C. Stable for one year after shipment.

### Storage Buffer:

PBS with 0.02% sodium azide and 50% glycerol, pH7.3

Aliquoting is unnecessary for -20°C storage

\*\*\* 20ul sizes contain 0.1% BSA

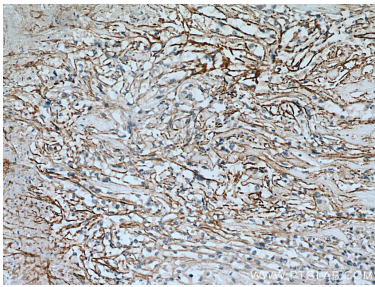
For technical support and original validation data for this product please contact:

T: 1 (888) 4PTGLAB (1-888-478-4522) (toll free in USA), or 1(312) 455-8498 (outside USA)

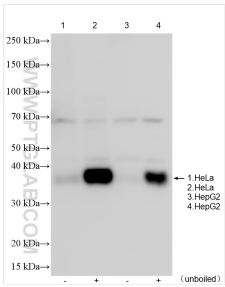
E: [proteintech@ptglab.com](mailto:proteintech@ptglab.com)  
W: [ptglab.com](http://ptglab.com)

This product is exclusively available under Proteintech Group brand and is not available to purchase from any other manufacturer.

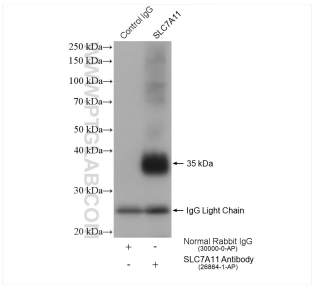
Selected Validation Data



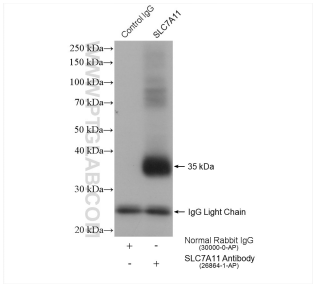
Immunohistochemical analysis of paraffin-embedded human renal cell carcinoma tissue slide using 26864-1-AP (SLC7A11/xCT antibody) at dilution of 1:200 (under 10x lens). Heat mediated antigen retrieval with Tris-EDTA buffer (pH 9.0).



Various lysates were subjected to SDS PAGE followed by western blot with 26864-1-AP (SLC7A11/xCT antibody) at dilution of 1:2000 incubated at room temperature for 1.5 hours.



IP result of anti-SLC7A11/xCT (IP:26864-1-AP, 4ug; Detection:26864-1-AP 1:800) with A549 cells lysate 960 ug.



IP result of anti-SLC7A11/xCT (IP:26864-1-AP, 4ug; Detection:26864-1-AP 1:800) with HepG2 cells lysate 1720 ug.