

For Research Use Only

KCTD3 Polyclonal antibody

Catalog Number: 26887-1-AP



Basic Information

Catalog Number:

26887-1-AP

Size:

150ul , Concentration: 1000 ug/ml by Nanodrop and 433 ug/ml by Bradford method using BSA as the standard;

Source:

Rabbit

Isotype:

IgG

Immunogen Catalog Number:

AG23211

GenBank Accession Number:

BC126173

GeneID (NCBI):

51133

UNIPROT ID:

Q9Y597

Full Name:

potassium channel tetramerisation domain containing 3

Calculated MW:

89 kDa

Observed MW:

89 kDa

Purification Method:

Antigen affinity purification

Recommended Dilutions:

WB 1:500-1:3000

Applications

Tested Applications:

WB, ELISA

Species Specificity:

human

Positive Controls:

WB : HepG2 cells,

Storage

Storage:

Store at -20°C. Stable for one year after shipment.

Storage Buffer:

PBS with 0.02% sodium azide and 50% glycerol pH 7.3.

Aliquoting is unnecessary for -20°C storage

*** 20ul sizes contain 0.1% BSA

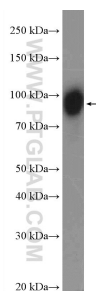
For technical support and original validation data for this product please contact:

T: 1 (888) 4PTGLAB (1-888-478-4522) (toll free in USA), or 1(312) 455-8498 (outside USA)

E: proteintech@ptglab.com
W: ptglab.com

This product is exclusively available under Proteintech Group brand and is not available to purchase from any other manufacturer.

Selected Validation Data



HepG2 cells were subjected to SDS PAGE followed by western blot with 26887-1-AP (KCTD3 Antibody) at dilution of 1:1500 incubated at room temperature for 1.5 hours.