

For Research Use Only

CWC22 Polyclonal antibody

Catalog Number: 26898-1-AP

1 Publications



Basic Information

Catalog Number:

26898-1-AP

Size:

150ul, Concentration: 650 ug/ml by Nanodrop and 400 ug/ml by Bradford method using BSA as the standard;

Source:

Rabbit

Isotype:

IgG

Immunogen Catalog Number:

AG25466

GenBank Accession Number:

BC093954

GeneID (NCBI):

57703

UNIPROT ID:

Q9HCG8

Full Name:

CWC22 spliceosome-associated protein homolog (S. cerevisiae)

Calculated MW:

908 aa, 106 kDa

Observed MW:

105-110 kDa

Purification Method:

Antigen affinity purification

Recommended Dilutions:

WB 1:2000-1:20000

IHC 1:50-1:500

Applications

Tested Applications:

WB, IHC, ELISA

Cited Applications:

WB

Species Specificity:

human

Cited Species:

human

Note-IHC: suggested antigen retrieval with TE buffer pH 9.0; (*) Alternatively, antigen retrieval may be performed with citrate buffer pH 6.0

Positive Controls:

WB : A549 cells, HepG2 cells

IHC : human intrahepatic cholangiocarcinoma tissue, human stomach tissue

Background Information

CWC22, Pre-mRNA-splicing factor CWC22 homolog, is a 908 amino acid protein, which contains 1 MI domain and 1 MIF4G domain and belongs to the CWC22 family. CWC22 is required for pre-mRNA splicing and for exon-junction complex (EJC) assembly and hinders EIF4A3 from non-specifically binding RNA and escorts it to the splicing machinery to promote EJC assembly on mature mRNAs.

Notable Publications

Author	Pubmed ID	Journal	Application
Cole Townsend	33243851	Science	WB

Storage

Storage:

Store at -20°C. Stable for one year after shipment.

Storage Buffer:

PBS with 0.02% sodium azide and 50% glycerol pH 7.3.

Aliquoting is unnecessary for -20°C storage

*** 20ul sizes contain 0.1% BSA

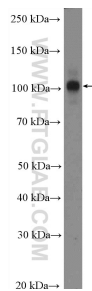
For technical support and original validation data for this product please contact:

T: 1 (888) 4PTGLAB (1-888-478-4522) (toll free in USA), or 1(312) 455-8498 (outside USA)

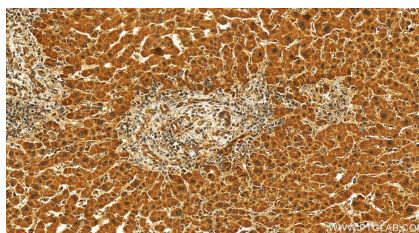
E: proteintech@ptglab.com
W: ptglab.com

This product is exclusively available under Proteintech Group brand and is not available to purchase from any other manufacturer.

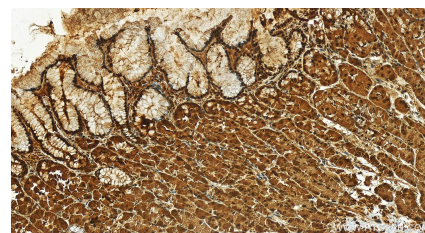
Selected Validation Data



A549 cells were subjected to SDS PAGE followed by western blot with 26898-1-AP (CWC22 Antibody) at dilution of 1:5000 incubated at room temperature for 1.5 hours.



Immunohistochemical analysis of paraffin-embedded human intrahepatic cholangiocarcinoma tissue slide using 26898-1-AP (CWC22 antibody) at dilution of 1:200 (under 20x lens). Heat mediated antigen retrieval with Tris-EDTA buffer (pH 9.0).



Immunohistochemical analysis of paraffin-embedded human stomach tissue slide using 26898-1-AP (CWC22 antibody) at dilution of 1:200 (under 20x lens). Heat mediated antigen retrieval with Tris-EDTA buffer (pH 9.0).