

# PKC Zeta Polyclonal antibody

Catalog Number: 26899-1-AP

4 Publications

## Basic Information

<b>Catalog Number:</b> 26899-1-AP	<b>GenBank Accession Number:</b> BC014270	<b>Purification Method:</b> Antigen affinity purification
<b>Size:</b> 150ul, Concentration: 600 µg/ml by Nanodrop and 333 µg/ml by Bradford method using BSA as the standard;	<b>GeneID (NCBI):</b> 5590	<b>Recommended Dilutions:</b> WB 1:1000-1:4000 IF 1:50-1:500
<b>Source:</b> Rabbit	<b>Full Name:</b> protein kinase C, zeta	
<b>Isotype:</b> IgG	<b>Calculated MW:</b> 80 kDa	
<b>Immunogen Catalog Number:</b> AG25391	<b>Observed MW:</b> 67 kDa	

## Applications

<b>Tested Applications:</b> IF, WB, ELISA	<b>Positive Controls:</b>
<b>Cited Applications:</b> WB	<b>WB:</b> HEK-293T cells, HT-29 cells
<b>Species Specificity:</b> human, mouse	<b>IF:</b> HeLa cells, NIH/3T3 cells
<b>Cited Species:</b> human, mouse	

## Background Information

Protein kinase C (PKC) zeta is a member of the PKC family of serine/threonine kinases which are involved in a variety of cellular processes such as proliferation, differentiation and secretion. Unlike the classical PKC isoenzymes which are calcium-dependent, PKC zeta exhibits a kinase activity which is independent of calcium and diacylglycerol but not of phosphatidylserine. Furthermore, it is insensitive to typical PKC inhibitors and cannot be activated by phorbol ester. Unlike the classical PKC isoenzymes, it has only a single zinc finger module. These structural and biochemical properties indicate that the zeta subspecies is related to, but distinct from other isoenzymes of PKC.

## Notable Publications

Author	Pubmed ID	Journal	Application
Qianxia Yin	33951300	J Cell Mol Med	WB
Hongyi Zhou	31185001	JCI Insight	WB
Zhong-Wen Chang	35122947	Fish Shellfish Immunol	WB

## Storage

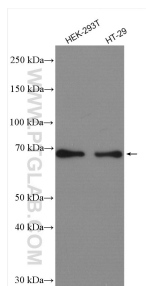
**Storage:**  
Store at -20°C. Stable for one year after shipment.  
**Storage Buffer:**  
PBS with 0.02% sodium azide and 50% glycerol pH 7.3.  
**Aliquoting is unnecessary for -20°C storage**

\*\*\* 20ul sizes contain 0.1% BSA

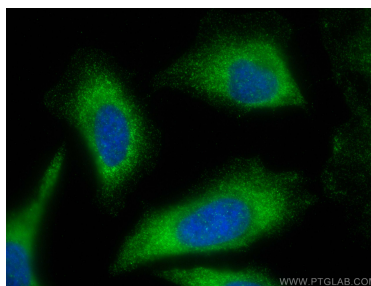
For technical support and original validation data for this product please contact:  
T: 1 (888) 4PTGLAB (1-888-478-4522) (toll free in USA), or 1(312) 455-8498 (outside USA)  
E: [proteintech@ptglab.com](mailto:proteintech@ptglab.com)  
W: [ptglab.com](http://ptglab.com)

This product is exclusively available under Proteintech Group brand and is not available to purchase from any other manufacturer.

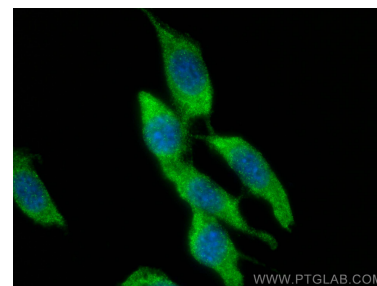
## Selected Validation Data



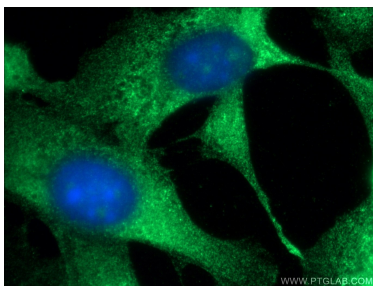
Various lysates were subjected to SDS PAGE followed by western blot with 26899-1-AP (PKC zeta antibody) at dilution of 1:2000 incubated at room temperature for 1.5 hours.



Immunofluorescent analysis of (-20°C Ethanol) fixed HeLa cells using PKC Zeta antibody (26899-1-AP) at dilution of 1:200 and CoraLite®488-Conjugated AffiniPure Goat Anti-Rabbit IgG(H+L).



Immunofluorescent analysis of (-20°C Ethanol) fixed NIH/3T3 cells using PKC Zeta antibody (26899-1-AP) at dilution of 1:200 and CoraLite®488-Conjugated AffiniPure Goat Anti-Rabbit IgG(H+L).



Immunofluorescent analysis of (-20°C Ethanol) fixed NIH/3T3 cells using 26899-1-AP (PKC zeta antibody) at dilution of 1:50 and Alexa Fluor 488-conjugated AffiniPure Goat Anti-Rabbit IgG(H+L).