

For Research Use Only

# DUSP7/PYST2 Polyclonal antibody

Catalog Number: 26910-1-AP

5 Publications



## Basic Information

<b>Catalog Number:</b> 26910-1-AP	<b>GenBank Accession Number:</b> BC104880	<b>Purification Method:</b> Antigen affinity purification
<b>Size:</b> 150ul, Concentration: 750 µg/ml by Nanodrop and 467 µg/ml by Bradford method using BSA as the standard;	<b>GeneID (NCBI):</b> 1849	<b>Recommended Dilutions:</b> WB 1:500-1:3000 IHC 1:50-1:500
<b>Source:</b> Rabbit	<b>Full Name:</b> dual specificity phosphatase 7	
<b>Isotype:</b> IgG	<b>Observed MW:</b> 45-50 kDa	
<b>Immunogen Catalog Number:</b> AG25488		

## Applications

<b>Tested Applications:</b> IHC, WB, ELISA	<b>Positive Controls:</b>
<b>Cited Applications:</b> IHC, WB	<b>WB:</b> rat heart tissue, mouse heart tissue, mouse kidney tissue
<b>Species Specificity:</b> human, mouse, rat	<b>IHC:</b> human breast cancer tissue, human liver tissue
<b>Cited Species:</b> human, mouse	
<b>Note-IHC: suggested antigen retrieval with TE buffer pH 9.0; (*) Alternatively, antigen retrieval may be performed with citrate buffer pH 6.0</b>	

## Background Information

Human dual-specificity phosphatase 7 (DUSP7/PYST2) is a member of a structurally homologous subfamily of MAP kinase phosphatases. DUSP7 is overexpressed in myeloid leukemia and other malignancies. It is known to bind and dephosphorylate Erk1/2, and as it, along with the other members of the DUSP family expresses high selectivity for MAP kinases. It has been suggested that it functions as a method for selectively activating/deactivating different members of that family.

## Notable Publications

Author	Pubmed ID	Journal	Application
Wan-Xin Peng	29041978	Mol Cancer	WB
Yuki Kanda	33249692	Genes Cells	WB
Yi-Ping Leng	28631302	Br J Pharmacol	WB

## Storage

**Storage:**  
Store at -20°C. Stable for one year after shipment.  
**Storage Buffer:**  
PBS with 0.02% sodium azide and 50% glycerol pH 7.3.  
Aliquoting is unnecessary for -20°C storage

\*\*\* 20ul sizes contain 0.1% BSA

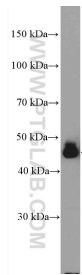
For technical support and original validation data for this product please contact:

T: 1 (888) 4PTGLAB (1-888-478-4522) (toll free in USA), or 1(312) 455-8498 (outside USA)

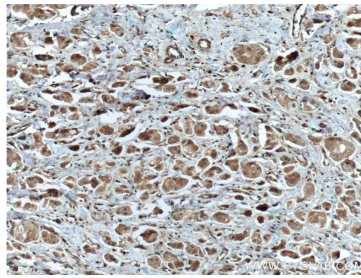
E: proteintech@ptglab.com  
W: ptglab.com

This product is exclusively available under Proteintech Group brand and is not available to purchase from any other manufacturer.

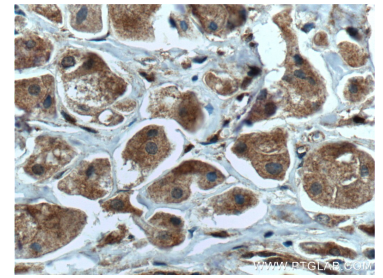
## Selected Validation Data



rat heart tissue were subjected to SDS PAGE followed by western blot with 26910-1-AP (DUSP7/PYST2 antibody at dilution of 1:1500 incubated at room temperature for 1.5 hours.



Immunohistochemical analysis of paraffin-embedded human breast cancer tissue slide using 26910-1-AP (DUSP7/PYST2 antibody) at dilution of 1:200 (under 10x lens. Heat mediated antigen retrieval with Tris-EDTA buffer (pH 9.0).



Immunohistochemical analysis of paraffin-embedded human breast cancer tissue slide using 26910-1-AP (DUSP7/PYST2 antibody) at dilution of 1:200 (under 40x lens. Heat mediated antigen retrieval with Tris-EDTA buffer (pH 9.0).