

For Research Use Only

# Claudin 2 Polyclonal antibody

Catalog Number: 26912-1-AP **3 Publications**



## Basic Information

<b>Catalog Number:</b> 26912-1-AP	<b>GenBank Accession Number:</b> BC014424	<b>Purification Method:</b> Antigen affinity purification
<b>Size:</b> 150ul , Concentration: 650 µg/ml by Nanodrop;	<b>GeneID (NCBI):</b> 9075	<b>Recommended Dilutions:</b> WB 1:500-1:2000
<b>Source:</b> Rabbit	<b>UNIPROT ID:</b> P57739	
<b>Isotype:</b> IgG	<b>Full Name:</b> claudin 2	
<b>Immunogen Catalog Number:</b> AG25527	<b>Calculated MW:</b> 25 kDa	
	<b>Observed MW:</b> 25 kDa	

## Applications

<b>Tested Applications:</b> WB, ELISA	<b>Positive Controls:</b> WB : HEK-293 cells, HepG2 cells
<b>Cited Applications:</b> WB, IF	
<b>Species Specificity:</b> human	
<b>Cited Species:</b> human, mouse	

## Background Information

Claudin 2, also named as SP82, belongs to the claudin family. Claudin 2 is a tetraspan membrane protein consisting of two extracellular domains (ECL1 and ECL2), a small intracellular loop connecting the second and third transmembrane sections and short intracellular N and C terminal portions. Claudin 2 is a cation-selective channel forming TJ protein expressed in leaky epithelia. Claudin 2 is a 230 amino acid transmembrane protein, with a calculated molecular mass of 25 kDa (PMID: 31726679)

## Notable Publications

Author	Pubmed ID	Journal	Application
Yajuan Tian	38216112	Toxicology	IF
Mingzhe Wang	37498932	Bioconjug Chem	WB
Weifang Wang	35911120	Front Nutr	IF

## Storage

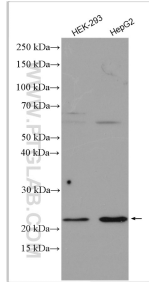
**Storage:**  
Store at -20°C. Stable for one year after shipment.  
**Storage Buffer:**  
PBS with 0.02% sodium azide and 50% glycerol pH 7.3.  
Aliquoting is unnecessary for -20°C storage

\*\*\* 20ul sizes contain 0.1% BSA

For technical support and original validation data for this product please contact:  
T: 1 (888) 4PTGLAB (1-888-478-4522) (toll free in USA), or 1(312) 455-8498 (outside USA)  
E: proteintech@ptglab.com  
W: ptglab.com

This product is exclusively available under Proteintech Group brand and is not available to purchase from any other manufacturer.

## Selected Validation Data



Various lysates were subjected to SDS PAGE followed by western blot with 26912-1-AP (Claudin 2 antibody) at dilution of 1:1000 incubated at room temperature for 1.5 hours.