

For Research Use Only

Claudin 2 Polyclonal antibody, PBS Only

Catalog Number: 26912-1-PBS



Basic Information

Catalog Number: 26912-1-PBS	GenBank Accession Number: BC014424	Purification Method: Antigen affinity purification
Size: 100ug , Concentration: 1 mg/ml by Nanodrop;	GeneID (NCBI): 9075	
Source: Rabbit	UNIPROT ID: P57739	
Isotype: IgG	Full Name: claudin 2	
Immunogen Catalog Number: AG25527	Calculated MW: 25 kDa	
	Observed MW: 25 kDa	

Applications

Tested Applications:
WB, Indirect ELISA

Species Specificity:
human

Background Information

Claudin 2, also named as SP82, belongs to the claudin family. Claudin 2 is a tetraspan membrane protein consisting of two extracellular domains (ECL1 and ECL2), a small intracellular loop connecting the second and third transmembrane sections and short intracellular N and C terminal portions. Claudin 2 is a cation-selective channel forming TJ protein expressed in leaky epithelia. Claudin 2 is a 230 amino acid transmembrane protein, with a calculated molecular mass of 25 kDa (PMID: 31726679)

Storage

Storage:
Store at -80°C.

Storage Buffer:
PBS Only

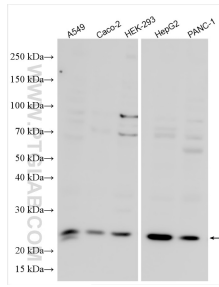
For technical support and original validation data for this product please contact:

T: 1 (888) 4PTGLAB (1-888-478-4522) (toll free in USA), or 1(312) 455-8498 (outside USA)

E: proteintech@ptglab.com
W: ptglab.com

This product is exclusively available under Proteintech Group brand and is not available to purchase from any other manufacturer.

Selected Validation Data



Various lysates were subjected to SDS PAGE followed by western blot with 26912-1-AP (Claudin 2 antibody) at dilution of 1:1000 incubated at room temperature for 1.5 hours. This data was developed using the same antibody clone with 26912-1-PBS in a different storage buffer formulation.