

For Research Use Only

# PKC eta Polyclonal antibody

Catalog Number: 26916-1-AP



## Basic Information

<b>Catalog Number:</b> 26916-1-AP	<b>GenBank Accession Number:</b> BC037268	<b>Purification Method:</b> Antigen affinity purification
<b>Size:</b> 150ul , Concentration: 580 ug/ml by Nanodrop;	<b>GeneID (NCBI):</b> 5583	<b>Recommended Dilutions:</b> WB: 1:1000-1:4000
<b>Source:</b> Rabbit	<b>UNIPROT ID:</b> P24723	
<b>Isotype:</b> IgG	<b>Full Name:</b> protein kinase C, eta	
<b>Immunogen Catalog Number:</b> AG25365	<b>Observed MW:</b> 75-90 kDa	

## Applications

<b>Tested Applications:</b> WB, ELISA	<b>Positive Controls:</b> WB : PC-3 cells, Jurkat cells
<b>Species Specificity:</b> human	

## Background Information

PRKCH (gene ID: 5583) encodes protein kinase C eta (PKC $\eta$ ), a calcium-independent, phospholipid-dependent serine/threonine kinase of the novel PKC subfamily. It regulates cell proliferation, differentiation, and apoptosis, with prominent roles in keratinocyte differentiation, early B-cell development, and epithelial barrier integrity. Genetic variants in PRKCH are linked to cerebral infarction and Alzheimer's disease, while PKC $\eta$  exhibits context-dependent functions in cancer-promoting progression and chemoresistance in some tumors (e.g., glioblastoma) but acting as a tumor suppressor in others (e.g., hepatocellular carcinoma).

## Storage

**Storage:**  
Store at -20°C. Stable for one year after shipment.  
**Storage Buffer:**  
PBS with 0.02% sodium azide and 50% glycerol, pH7.3  
Aliquoting is unnecessary for -20°C storage

\*\*\* 20ul sizes contain 0.1% BSA

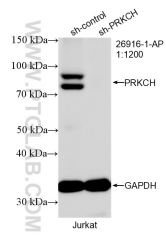
For technical support and original validation data for this product please contact:

T: 1 (888) 4PTGLAB (1-888-478-4522) (toll free in USA), or 1(312) 455-8498 (outside USA)

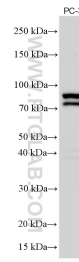
E: [proteintech@ptglab.com](mailto:proteintech@ptglab.com)  
W: [ptglab.com](http://ptglab.com)

This product is exclusively available under Proteintech Group brand and is not available to purchase from any other manufacturer.

## Selected Validation Data



WB result of PKC eta antibody (26916-1-AP; 1:1200; incubated at room temperature for 1.5 hours) with sh-Control and sh-PKC eta transfected Jurkat cells.



PC-3 cells were subjected to SDS PAGE followed by western blot with 26916-1-AP (PKC eta antibody) at dilution of 1:2000 incubated at room temperature for 1.5 hours.