

For Research Use Only

PDGFA Polyclonal antibody, PBS Only

Catalog Number: 26940-1-PBS



Basic Information

Catalog Number:

26940-1-PBS

Size:

100ug, Concentration: 1 mg/ml by Nanodrop;

Source:

Rabbit

Isotype:

IgG

Immunogen Catalog Number:

AG25643

GenBank Accession Number:

BC146594

GeneID (NCBI):

5154

UNIPROT ID:

P04085

Full Name:

platelet-derived growth factor alpha polypeptide

Calculated MW:

196 aa, 22 kDa

Observed MW:

13-16 kDa

Purification Method:

Antigen affinity purification

Applications

Tested Applications:

WB, Indirect ELISA

Species Specificity:

human, mouse, rat

Background Information

PDGFA is a member of the platelet-derived growth factor family. Four members of this family are mitogenic factors for cells of mesenchymal origin, and they are characterized by a motif of eight cysteines. PDGFA plays an essential role in the regulation of embryonic development, cell proliferation, cell migration, and chemotaxis. It is also required for normal lung alveolar septum formation during embryogenesis, development of the gastrointestinal tract, and spermatogenesis. PDGFA is also involved in oligodendrocyte development and the myelination process in the spinal cord and cerebellum. PDGF-A protein monomer is about 13-16 kDa, and PDGF-AA is a 28.5 kDa A chain homodimer.

Storage

Storage:

Store at -80°C.

Storage Buffer:

PBS only, pH7.3

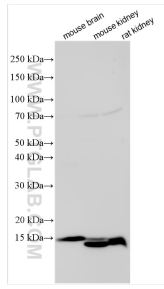
For technical support and original validation data for this product please contact:

T: 1 (888) 4PTGLAB (1-888-478-4522) (toll free in USA), or 1(312) 455-8498 (outside USA)

E: proteintech@ptglab.com
W: ptglab.com

This product is exclusively available under Proteintech Group brand and is not available to purchase from any other manufacturer.

Selected Validation Data



Various lysates were subjected to SDS PAGE followed by western blot with 26940-1-AP (PDGFA antibody) at dilution of 1:3000 incubated at room temperature for 1.5 hours. This data was developed using the same antibody clone with 26940-1-PBS in a different storage buffer formulation.