

For Research Use Only

ELMO1 Polyclonal antibody

Catalog Number: 26974-1-AP



Basic Information

Catalog Number: 26974-1-AP	GenBank Accession Number: BC114341	Purification Method: Antigen affinity purification
Size: 150ul , Concentration: 350 ug/ml by Nanodrop;	GeneID (NCBI): 9844	Recommended Dilutions: WB: 1:1000-1:6000
Source: Rabbit	UNIPROT ID: Q92556	IHC: 1:50-1:500
Isotype: IgG	Full Name: engulfment and cell motility 1	IF/ICC: 1:50-1:500
Immunogen Catalog Number: AG25635	Observed MW: 80-84 kDa	

Applications

Tested Applications: WB, IHC, IF/ICC, ELISA	Positive Controls:
Species Specificity: human, mouse, rat	WB : Jurkat cells, mouse brain tissue, rat brain tissue
Note-IHC: suggested antigen retrieval with TE buffer pH 9.0; (*) Alternatively, antigen retrieval may be performed with citrate buffer pH 6.0	IHC : mouse spleen tissue, human placenta tissue
	IF/ICC : K-562 cells, Jurkat cells

Background Information

ELMO1 (Engulfment and cell motility protein 1) is a cytoplasmic adapter protein that physically associates with members of the Dock-A family of Rac-GEFs, of which Dock1 and Dock2 are the best characterized (PMID: 24821968). ELMO1 is expressed in platelets and negatively regulates integrin-mediated platelet spreading. Upregulated ELMO1 expression is associated with a poor prognosis in hepatocellular carcinoma (HCC), as well as increased cell growth, invasion, migration, angiogenesis and EMT in vitro and in vivo (PMID: 31324602).

Storage

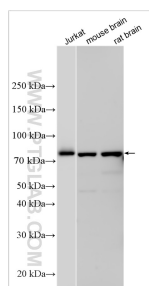
Storage:
Store at -20°C. Stable for one year after shipment.
Storage Buffer:
PBS with 0.02% sodium azide and 50% glycerol, pH7.3
Aliquoting is unnecessary for -20°C storage

*** 20ul sizes contain 0.1% BSA

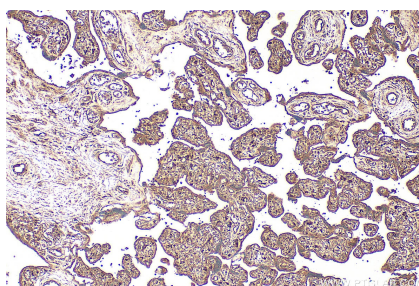
For technical support and original validation data for this product please contact:
T: 1 (888) 4PTGLAB (1-888-478-4522) (toll free in USA), or 1(312) 455-8498 (outside USA)
E: proteintech@ptglab.com
W: ptglab.com

This product is exclusively available under Proteintech Group brand and is not available to purchase from any other manufacturer.

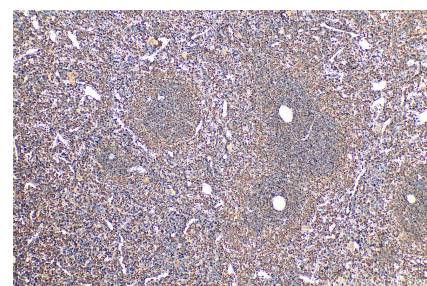
Selected Validation Data



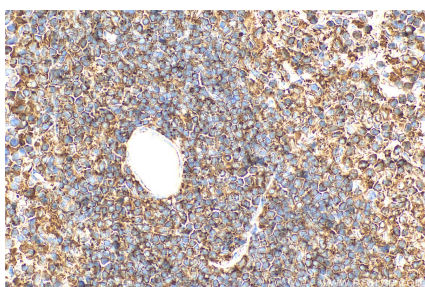
Various lysates were subjected to SDS PAGE followed by western blot with 26974-1-AP (ELMO1 antibody) at dilution of 1:3000 incubated at room temperature for 1.5 hours.



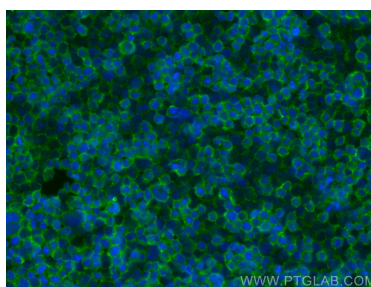
Immunohistochemical analysis of paraffin-embedded human placenta tissue slide using 26974-1-AP (ELMO1 antibody) at dilution of 1:200 (under 10x lens). Heat mediated antigen retrieval with Tris-EDTA buffer (pH 9.0).



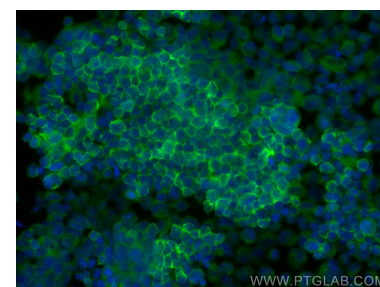
Immunohistochemical analysis of paraffin-embedded mouse spleen tissue slide using 26974-1-AP (ELMO1 antibody) at dilution of 1:200 (under 10x lens). Heat mediated antigen retrieval with Tris-EDTA buffer (pH 9.0).



Immunohistochemical analysis of paraffin-embedded mouse spleen tissue slide using 26974-1-AP (ELMO1 antibody) at dilution of 1:200 (under 40x lens). Heat mediated antigen retrieval with Tris-EDTA buffer (pH 9.0).



Immunofluorescent analysis of (4% PFA) fixed Jurkat cells using ELMO1 antibody (26974-1-AP) at dilution of 1:200 and CoraLite®488-Conjugated Goat Anti-Rabbit IgG(H+L) (SA00013-2).



Immunofluorescent analysis of (4% PFA) fixed K-562 cells using ELMO1 antibody (26974-1-AP) at dilution of 1:200 and CoraLite®488-Conjugated Goat Anti-Rabbit IgG(H+L) (SA00013-2).