

For Research Use Only

RIT1 Polyclonal antibody

Catalog Number: 26977-1-AP



Basic Information

Catalog Number:

26977-1-AP

Size:

150ul, Concentration: 900 ug/ml by Nanodrop;

Source:

Rabbit

Isotype:

IgG

Immunogen Catalog Number:

AG25636

GenBank Accession Number:

BC104186

GeneID (NCBI):

6016

UNIPROT ID:

Q92963

Full Name:

Ras-like without CAAX 1

Calculated MW:

25 kDa

Observed MW:

25-28 kDa

Purification Method:

Antigen affinity purification

Recommended Dilutions:

WB 1:1000-1:4000

IF/ICC 1:50-1:500

Applications

Tested Applications:

WB, IF/ICC, ELISA

Species Specificity:

human

Positive Controls:

WB : A549 cells, HeLa cells, human placenta tissue

IF/ICC : MCF-7 cells,

Background Information

RIT1 (Ras-like without CAAX protein 1) is also named as RIBB, ROC1 and GTP-binding protein Rit1. RIT1 serves as a regulatory factor for neuronal cell proliferation, survival, and differentiation (PMID: 28007959). Rit1 mediates oxidative stress resistance, contributing to cell survival via the p38 MAPK signaling pathway (PMID: 21737674). As a small G protein of Ras family, RIT1 plays a critical role in various tumors (such as hepatocellular carcinoma, HCC) (PMID: 38017479). It is worth noting that RIT1 is frequently amplified in various human cancers including HCC, lung adenocarcinoma, cholangiocarcinoma, uterine carcinosarcoma, breast cancer, and ovarian cancer (PMID: 38017479).

Storage

Storage:

Store at -20°C. Stable for one year after shipment.

Storage Buffer:

PBS with 0.02% sodium azide and 50% glycerol, pH7.3

Aliquoting is unnecessary for -20°C storage

*** 20ul sizes contain 0.1% BSA

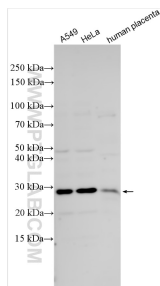
For technical support and original validation data for this product please contact:

T: 1 (888) 4PTGLAB (1-888-478-4522) (toll free in USA), or 1(312) 455-8498 (outside USA)

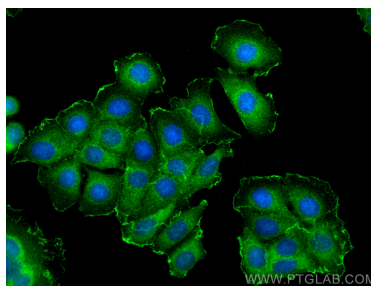
E: proteintech@ptglab.com
W: ptglab.com

This product is exclusively available under Proteintech Group brand and is not available to purchase from any other manufacturer.

Selected Validation Data



Various lysates were subjected to SDS PAGE followed by western blot with 26977-1-AP (RIT1 antibody) at dilution of 1:2000 incubated at room temperature for 1.5 hours.



Immunofluorescent analysis of (-20°C Methanol) fixed MCF-7 cells using RIT1 antibody (26977-1-AP) at dilution of 1:200 and CoraLite® 488-Conjugated Goat Anti-Rabbit IgG(H+L) (SA00013-2).