

For Research Use Only

DCDC2 Polyclonal antibody, PBS Only

Catalog Number: 26978-1-PBS

Featured Product



Basic Information

Catalog Number:

26978-1-PBS

Size:

100ug, Concentration: 1 mg/ml by Nanodrop;

Source:

Rabbit

Isotype:

IgG

Immunogen Catalog Number:

AG25577

GenBank Accession Number:

BC050704

GeneID (NCBI):

51473

UNIPROT ID:

Q9UHG0

Full Name:

doublecortin domain containing 2

Calculated MW:

476 aa, 53 kDa

Observed MW:

52 kDa

Purification Method:

Antigen affinity purification

Applications

Tested Applications:

WB, IHC, IF-P, ELISA

Species Specificity:

human, mouse

Background Information

DCDC2 (Doublecortin domain-containing protein 2), also known as KIAA1154. DCDC2 is expressed in the central nervous system of adults and fetuses, especially in the olfactory cortex, inferior temporal cortex, medial temporal cortex, hypothalamus, amygdala and hippocampus. DCDC2 protein contains two dicortical protein domains that bind to microtubules and enhance microtubule polymerization, which may play a role in neuronal migration and affect the signal transduction of primary cilia. In addition, DCDC2 also plays a role in inhibiting classical WNT signaling. DCDC2 may affect the development and function of the brain by affecting the migration of neurons and the signal conduction of primary cilia, and then it is related to reading ability (PMID: 21457949). The molecular weight of DCDC2 is 52 kDa, it also has another isoform with a molecular weight of 25 kDa.

Storage

Storage:

Store at -80°C.

Storage Buffer:

PBS only, pH7.3

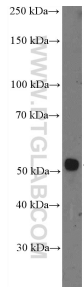
For technical support and original validation data for this product please contact:

T: 1 (888) 4PTGLAB (1-888-478-4522) (toll free in USA), or 1(312) 455-8498 (outside USA)

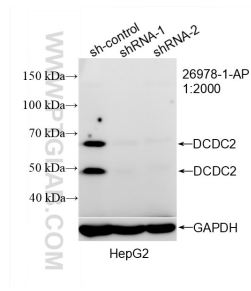
E: proteintech@ptglab.com
W: ptglab.com

This product is exclusively available under Proteintech Group brand and is not available to purchase from any other manufacturer.

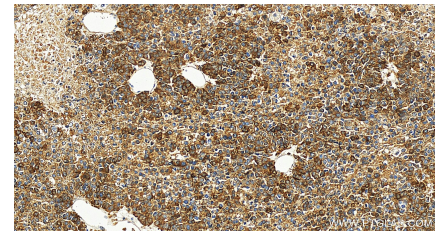
Selected Validation Data



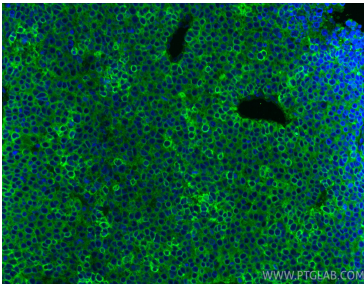
mouse placenta tissue were subjected to SDS PAGE followed by western blot with 26978-1-AP (DCDC2 Antibody) at dilution of 1:1000 incubated at room temperature for 1.5 hours. This data was developed using the same antibody clone with 26978-1-PBS in a different storage buffer formulation.



WB result of DCDC2 antibody (26978-1-AP; 1:2000; incubated at room temperature for 1.5 hours) with sh-Control and sh-DCDC2 transfected HepG2 cells. This data was developed using the same antibody clone with 26978-1-PBS in a different storage buffer formulation.



Immunohistochemical analysis of paraffin-embedded human Hepatocellular carcinoma slide using 26978-1-AP (DCDC2 antibody) at dilution of 1:2000 (under 20x lens). Heat mediated antigen retrieval with Tris-EDTA buffer (pH 9.0). This data was developed using the same antibody clone with 26978-1-PBS in a different storage buffer formulation.



Immunofluorescent analysis of (4% PFA) fixed paraffin-embedded human liver cancer tissue using DCDC2 antibody (26978-1-AP) at dilution of 1:200 and CoraLite®488-Conjugated Goat Anti-Rabbit IgG(H+L) (SA00013-2). Heat mediated antigen retrieval with Tris-EDTA buffer (pH 9.0). This data was developed using the same antibody clone with 26978-1-PBS in a different storage buffer formulation.