

For Research Use Only

S100A9 Polyclonal antibody

Catalog Number: 26992-1-AP

Featured Product

57 Publications



Basic Information

Catalog Number:

26992-1-AP

Size:

150ul, Concentration: 500 ug/ml by Nanodrop;

Source:

Rabbit

Isotype:

IgG

Immunogen Catalog Number:

AG25764

GenBank Accession Number:

BC047681

GeneID (NCBI):

6280

UNIPROT ID:

P06702

Full Name:

S100 calcium binding protein A9

Calculated MW:

13 kDa

Observed MW:

14 kDa

Purification Method:

Antigen affinity purification

Recommended Dilutions:

WB 1:1000-1:4000

IP 0.5-4.0 ug for 1.0-3.0 mg of total protein lysate

IHC 1:50-1:500

IF/ICC 1:200-1:800

Applications

Tested Applications:

WB, IHC, IF/ICC, IP, ELISA

Cited Applications:

WB, IHC, IF, IP, CoIP

Species Specificity:

human, mouse

Cited Species:

human, mouse, rat

Positive Controls:

WB : HL-60 cells, MCF-7 cells, THP-1 cells

IP : MCF-7 cells,

IHC : human breast cancer tissue, human liver cancer tissue, mouse spleen tissue, human tonsillitis tissue, human oesophagus cancer tissue

IF/ICC : HeLa cells, A549 cells, HepG2 cells

Note-IHC: suggested antigen retrieval with TE buffer pH 9.0; (*) Alternatively, antigen retrieval may be performed with citrate buffer pH 6.0

Background Information

S100A9 is a calcium binding protein as a member of the S100 family of proteins. S100 proteins are low molecular weight (9 to 14 kDa) intracellular calcium-binding proteins that control key cellular pathways including regulation of the cytoskeleton, cell migration and adhesion, and host oxidative defense. S100A9 may exist as a homodimer, heterodimer with an S100A8 partner (S100A8/A9), or as a heterotetramer with an S100A8 partner (S100A8/A9). S100A8 and S100A9 are found intracellularly in granulocytes, monocytes, and early differentiation stages of macrophages.

Notable Publications

Author	Pubmed ID	Journal	Application
Yi-Han Lin	32963032	Mol Cell Proteomics	WB
Li Zhang	32920982	Acta Physiol (Oxf)	WB
Yize Sun	34673424	Biomed Pharmacother	WB

Storage

Storage:

Store at -20°C. Stable for one year after shipment.

Storage Buffer:

PBS with 0.02% sodium azide and 50% glycerol, pH7.3

Aliquoting is unnecessary for -20°C storage

*** 20ul sizes contain 0.1% BSA

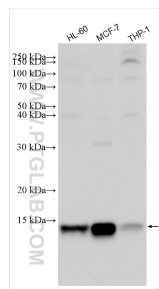
For technical support and original validation data for this product please contact:

T: 1 (888) 4PTGLAB (1-888-478-4522) (toll free in USA), or 1(312) 455-8498 (outside USA)

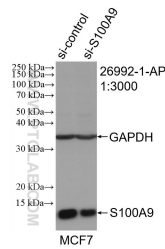
E: proteintech@ptglab.com
W: ptglab.com

This product is exclusively available under Proteintech Group brand and is not available to purchase from any other manufacturer.

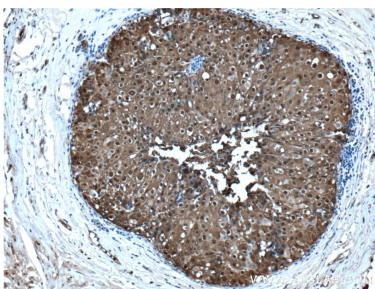
Selected Validation Data



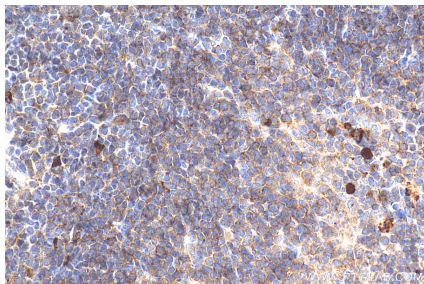
Various lysates were subjected to SDS PAGE followed by western blot with 26992-1-AP (S100A9 antibody) at dilution of 1:2000 incubated at room temperature for 1.5 hours.



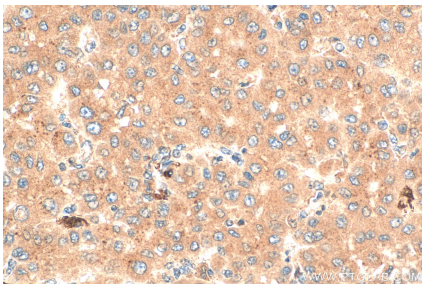
WB result of S100A9 antibody (26992-1-AP; 1:3000; incubated at room temperature for 1.5 hours) with sh-Control and sh-S100A9 transfected MCF-7 cells.



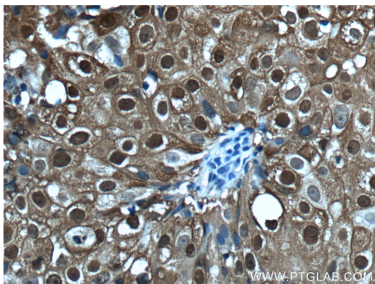
Immunohistochemical analysis of paraffin-embedded human breast cancer tissue slide using 26992-1-AP (S100A9 Antibody) at dilution of 1:200 (under 10x lens). Heat mediated antigen retrieval with Tris-EDTA buffer (pH 9.0).



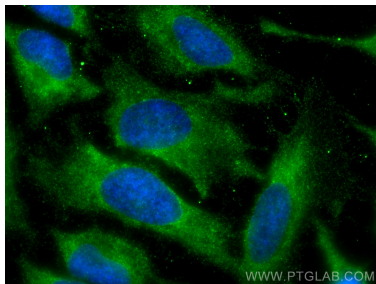
Immunohistochemical analysis of paraffin-embedded mouse spleen tissue slide using 26992-1-AP (S100A9 antibody) at dilution of 1:200 (under 40x lens). Heat mediated antigen retrieval with Tris-EDTA buffer (pH 9.0).



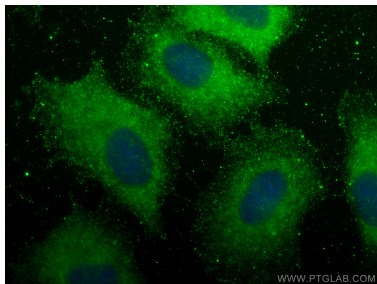
Immunohistochemical analysis of paraffin-embedded human liver cancer tissue slide using 26992-1-AP (S100A9 antibody) at dilution of 1:200 (under 40x lens). Heat mediated antigen retrieval with Tris-EDTA buffer (pH 9.0).



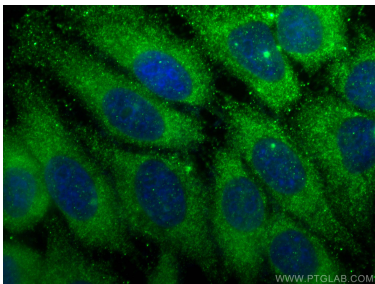
Immunohistochemical analysis of paraffin-embedded human breast cancer tissue slide using 26992-1-AP (S100A9 Antibody) at dilution of 1:200 (under 40x lens). Heat mediated antigen retrieval with Tris-EDTA buffer (pH 9.0).



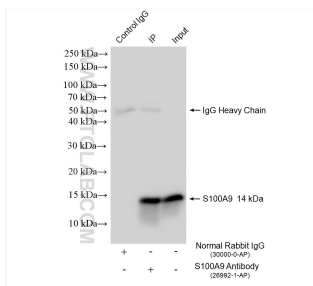
Immunofluorescent analysis of (-20°C Methanol) fixed HeLa cells using S100A9 antibody (26992-1-AP) at dilution of 1:400 and CoraLite®488-Conjugated AffiniPure Goat Anti-Rabbit IgG(H+L).



Immunofluorescent analysis of (-20°C Methanol) fixed A549 cells using S100A9 antibody (26992-1-AP) at dilution of 1:200 and CoraLite®488-Conjugated AffiniPure Goat Anti-Rabbit IgG(H+L).



Immunofluorescent analysis of (-20°C Ethanol) fixed HepG2 cells using S100A9 antibody (26992-1-AP) at dilution of 1:400 and CoraLite®488-Conjugated AffiniPure Goat Anti-Rabbit IgG(H+L).



IP result of anti-S100A9 (IP:26992-1-AP, 4ug;
Detection:26992-1-AP 1:3000) with MCF-7 cells
lysate 1600 ug.