

For Research Use Only

CITED1 Polyclonal antibody

Catalog Number: 26999-1-AP

2 Publications



Basic Information

Catalog Number:

26999-1-AP

Size:

150ul, Concentration: 1000 ug/ml by Nanodrop and 467 ug/ml by Bradford method using BSA as the standard;

Source:

Rabbit

Isotype:

IgG

Immunogen Catalog Number:

AG24643

GenBank Accession Number:

BC004240

GeneID (NCBI):

4435

UNIPROT ID:

Q99966

Full Name:

Cbp/p300-interacting transactivator, with Glu/Asp-rich carboxy-terminal domain, 1

Calculated MW:

27 kDa

Observed MW:

30 kDa

Purification Method:

Antigen affinity purification

Recommended Dilutions:

WB 1:1000-1:4000

IP 0.5-4.0 ug for 1.0-3.0 mg of total protein lysate

IHC 1:500-1:2000

IF/ICC 1:300-1:1200

Applications

Tested Applications:

WB, IHC, IF/ICC, FC (Intra), IP, ELISA

Cited Applications:

WB

Species Specificity:

human, mouse, rat

Cited Species:

human, rabbit

Note-IHC: suggested antigen retrieval with TE buffer pH 9.0; (*) Alternatively, antigen retrieval may be performed with citrate buffer pH 6.0

Positive Controls:

WB : rat testis tissue, A375 cells, mouse testis tissue

IP : A375 cells,

IHC : human colon cancer tissue, human thyroid cancer tissue, rat testis tissue

IF/ICC : HEK-293 cells,

Background Information

CITED1, also named as MSG1, belongs to the CITED family. CITED1 is a bifunctional transcriptional cofactor which is able to activate or repress transcription in association with other transcription factors. The CITED1 gene encodes a 27 kDa protein, but a 30 kDa band was also detected in the publication. The elevation of CITED1 may be directly associated with the preneoplastic phenotype (PMID: 23935526, 15272279, 15843474).

Notable Publications

Author	Pubmed ID	Journal	Application
Jie Yang	38998044	Animals (Basel)	WB
Xin Gu	37616343	Science	WB

Storage

Storage:

Store at -20°C. Stable for one year after shipment.

Storage Buffer:

PBS with 0.02% sodium azide and 50% glycerol pH 7.3.

Aliquoting is unnecessary for -20°C storage

*** 20ul sizes contain 0.1% BSA

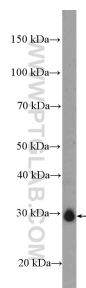
For technical support and original validation data for this product please contact:

T: 1 (888) 4PTGLAB (1-888-478-4522) (toll free in USA), or 1(312) 455-8498 (outside USA)

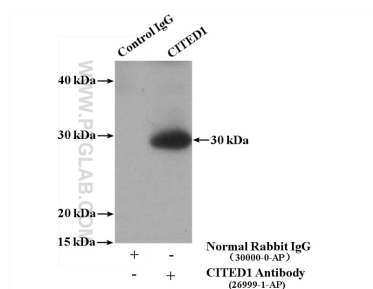
E: proteintech@ptglab.com
W: ptglab.com

This product is exclusively available under Proteintech Group brand and is not available to purchase from any other manufacturer.

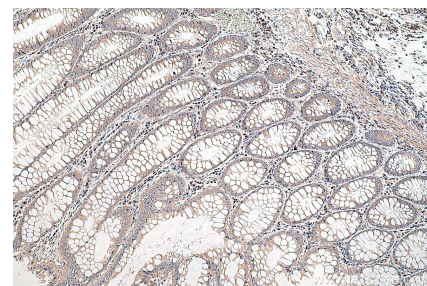
Selected Validation Data



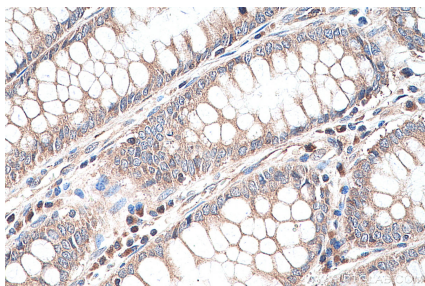
rat testis tissue were subjected to SDS PAGE followed by western blot with 26999-1-AP (CITED1 antibody) at dilution of 1:2000 incubated at room temperature for 1.5 hours.



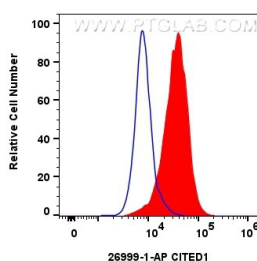
IP result of anti-CITED1 (IP:26999-1-AP, 4ug; Detection:26999-1-AP 1:300) with A375 cells lysate 3000ug.



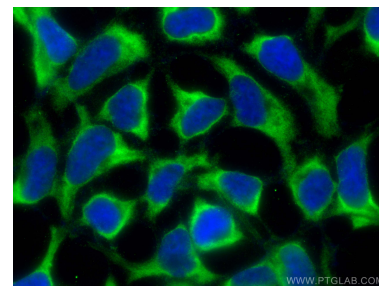
Immunohistochemical analysis of paraffin-embedded human colon cancer tissue slide using 26999-1-AP (CITED1 antibody) at dilution of 1:1000 (under 10x lens). Heat mediated antigen retrieval with Tris-EDTA buffer (pH 9.0).



Immunohistochemical analysis of paraffin-embedded human colon cancer tissue slide using 26999-1-AP (CITED1 antibody) at dilution of 1:1000 (under 40x lens). Heat mediated antigen retrieval with Tris-EDTA buffer (pH 9.0).



1x10⁶ HEK-293T cells were intracellularly stained with 0.4 ug CITED1 Polyclonal antibody (26999-1-AP) and CoraLite®488-Conjugated Goat Anti-Rabbit IgG(H+L) (SA00013-2)(red), or 0.4 ug Rabbit IgG control Rabbit PolyAb (30000-0-AP) (blue). Cells were fixed and permeabilized with Transcription Factor Staining Buffer Kit (PF00011).



Immunofluorescent analysis of (-20°C Ethanol) fixed HEK-293 cells using CITED1 antibody (26999-1-AP) at dilution of 1:600 and CoraLite®488-Conjugated AffiniPure Goat Anti-Rabbit IgG(H+L) (SA00013-2).