

For Research Use Only

# SHQ1 Polyclonal antibody

Catalog Number: 27020-1-AP

3 Publications



## Basic Information

### Catalog Number:

27020-1-AP

### Size:

150ul, Concentration: 400 ug/ml by Nanodrop and 300 ug/ml by Bradford method using BSA as the standard;

### Source:

Rabbit

### Isotype:

IgG

### Immunogen Catalog Number:

AG25559

### GenBank Accession Number:

BC017274

### GeneID (NCBI):

55164

### UNIPROT ID:

Q6PI26

### Full Name:

SHQ1 homolog (S. cerevisiae)

### Calculated MW:

593 aa, 67 kDa

### Observed MW:

70 kDa-80 kDa

### Purification Method:

Antigen affinity purification

### Recommended Dilutions:

WB 1:1000-1:4000

IP 0.5-4.0 ug for 1.0-3.0 mg of total protein lysate

IHC 1:50-1:500

IF/ICC 1:50-1:500

## Applications

### Tested Applications:

WB, IHC, IF/ICC, IP, ELISA

### Cited Applications:

WB, IP, CoIP

### Species Specificity:

human

### Cited Species:

human, mouse

**Note-IHC: suggested antigen retrieval with TE buffer pH 9.0; (\*) Alternatively, antigen retrieval may be performed with citrate buffer pH 6.0**

### Positive Controls:

WB : K-562 cells, A549 cells, HEK-293T cells

IP : K-562 cells,

IHC : human colon cancer tissue, human prostate hyperplasia tissue

IF/ICC : A431 cells,

## Notable Publications

Author	Pubmed ID	Journal	Application
Chien-Hui Chang	39326821	Exp Neurol	WB
Jian Qin	37879098	Hum Mol Genet	WB,IP,CoIP
Florence Schlotter	36869663	Nucleic Acids Res	WB,IP

## Storage

### Storage:

Store at -20°C. Stable for one year after shipment.

### Storage Buffer:

PBS with 0.02% sodium azide and 50% glycerol pH 7.3.

Aliquoting is unnecessary for -20°C storage

\*\*\* 20ul sizes contain 0.1% BSA

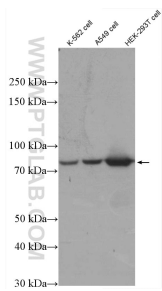
For technical support and original validation data for this product please contact:

T: 1 (888) 4PTGLAB (1-888-478-4522) (toll free in USA), or 1(312) 455-8498 (outside USA)

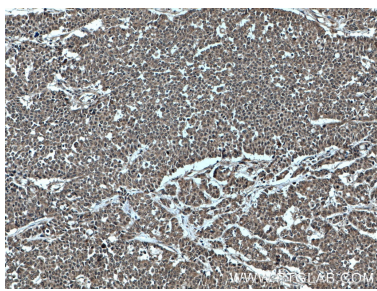
E: [proteintech@ptglab.com](mailto:proteintech@ptglab.com)  
W: [ptglab.com](http://ptglab.com)

This product is exclusively available under Proteintech Group brand and is not available to purchase from any other manufacturer.

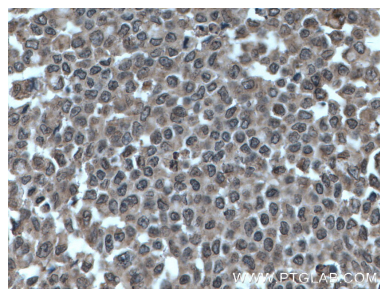
Selected Validation Data



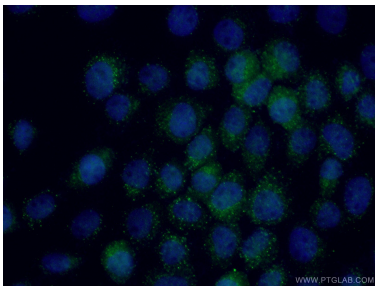
Various lysates were subjected to SDS PAGE followed by western blot with 27020-1-AP (SHQ1 antibody) at dilution of 1:2000 incubated at room temperature for 1.5 hours.



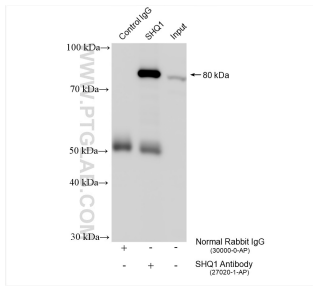
Immunohistochemical analysis of paraffin-embedded human colon cancer tissue slide using 27020-1-AP (SHQ1 antibody) at dilution of 1:200 (under 10x lens. Heat mediated antigen retrieval with Tris-EDTA buffer (pH 9.0).



Immunohistochemical analysis of paraffin-embedded human colon cancer tissue slide using 27020-1-AP (SHQ1 antibody) at dilution of 1:200 (under 40x lens. Heat mediated antigen retrieval with Tris-EDTA buffer (pH 9.0).



Immunofluorescent analysis of (4% PFA) fixed A431 cells using 27020-1-AP (SHQ1 antibody) at dilution of 1:50 and Alexa Fluor 488-Conjugated Goat Anti-Rabbit IgG(H+L).



IP result of anti-SHQ1 (IP:27020-1-AP, 4ug; Detection:27020-1-AP 1:1500) with K-562 cells lysate 2400 ug.