

For Research Use Only

# LPIN1 Polyclonal antibody

Catalog Number: 27026-1-AP

Featured Product

7 Publications



## Basic Information

### Catalog Number:

27026-1-AP

### Size:

150ul, Concentration: 300 ug/ml by Nanodrop and 267 ug/ml by Bradford method using BSA as the standard;

### Source:

Rabbit

### Isotype:

IgG

### Immunogen Catalog Number:

AG25815

### GenBank Accession Number:

BC030537

### GeneID (NCBI):

23175

### UNIPROT ID:

Q14693

### Full Name:

lipin 1

### Calculated MW:

890 aa, 99 kDa

### Observed MW:

110-130 kDa

### Purification Method:

Antigen affinity purification

### Recommended Dilutions:

WB 1:2000-1:8000

IP 0.5-4.0 ug for 1.0-3.0 mg of total protein lysate

IHC 1:250-1:1000

## Applications

### Tested Applications:

WB, IP, IHC, ELISA

### Cited Applications:

WB

### Species Specificity:

human

### Cited Species:

human, mouse, pig

**Note-IHC: suggested antigen retrieval with TE buffer pH 9.0; (\*) Alternatively, antigen retrieval may be performed with citrate buffer pH 6.0**

### Positive Controls:

WB : A549 cells, LNCaP cells

IP : LNCaP cells,

IHC : human liver cancer tissue,

## Notable Publications

Author	Pubmed ID	Journal	Application
Holly Merta	34852214	Dev Cell	WB
Shuhua Shan	32657580	J Agric Food Chem	WB
Mengting Chen	39330833	Toxins (Basel)	WB

## Storage

### Storage:

Store at -20°C. Stable for one year after shipment.

### Storage Buffer:

PBS with 0.02% sodium azide and 50% glycerol pH 7.3.

Aliquoting is unnecessary for -20°C storage

\*\*\* 20ul sizes contain 0.1% BSA

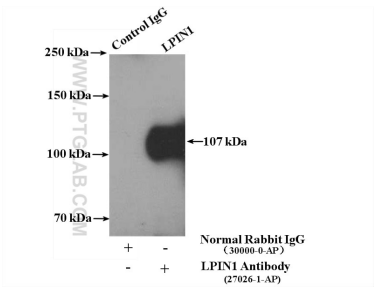
For technical support and original validation data for this product please contact:

T: 1 (888) 4PTGLAB (1-888-478-4522) (toll free in USA), or 1(312) 455-8498 (outside USA)

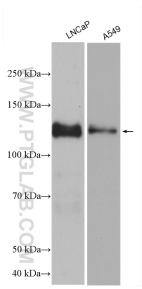
E: [proteintech@ptglab.com](mailto:proteintech@ptglab.com)  
W: [ptglab.com](http://ptglab.com)

This product is exclusively available under Proteintech Group brand and is not available to purchase from any other manufacturer.

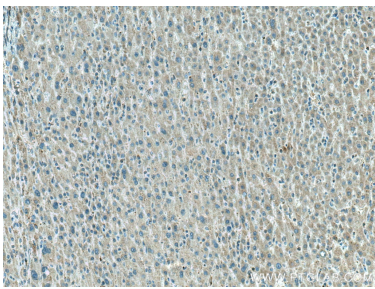
Selected Validation Data



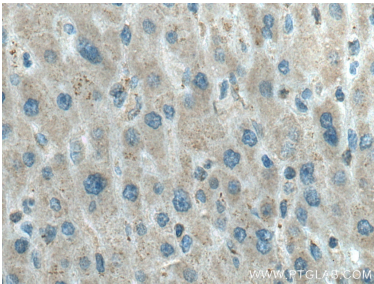
IP result of anti-LPIN1 (IP:27026-1-AP, 4ug; Detection:27026-1-AP 1:500) with LNCaP cells lysate 2400 ug.



Various lysates were subjected to SDS PAGE followed by western blot with 27026-1-AP (LPIN1 antibody) at dilution of 1:5000 incubated at room temperature for 1.5 hours.



Immunohistochemical analysis of paraffin-embedded human liver cancer tissue slide using 27026-1-AP (LPIN1 antibody) at dilution of 1:500 (under 10x lens). Heat mediated antigen retrieval with Tris-EDTA buffer (pH 9.0).



Immunohistochemical analysis of paraffin-embedded human liver cancer tissue slide using 27026-1-AP (LPIN1 antibody) at dilution of 1:500 (under 40x lens). Heat mediated antigen retrieval with Tris-EDTA buffer (pH 9.0).